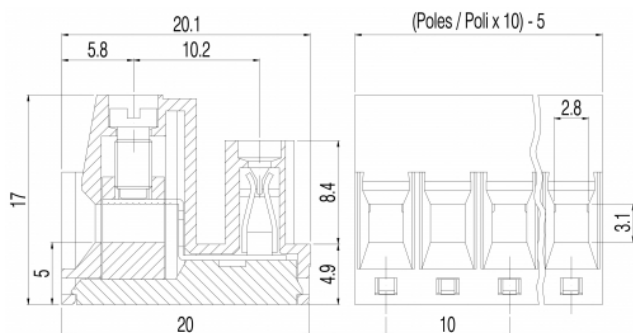
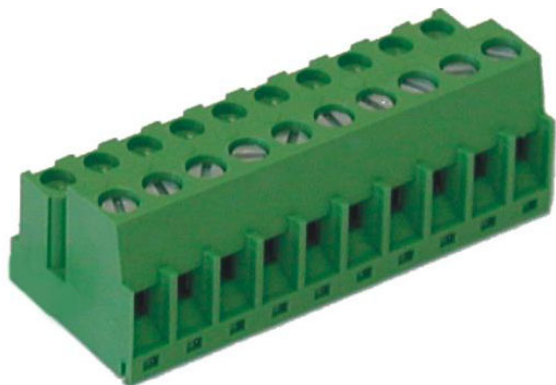


SVR__-10



GENERAL INFORMATION

pitch	10 mm
Height	17 mm
Depth	20 mm
Dimensional class	Media
Wire section	2.5 mm ² / 14 AWG
Clamp opening size	2.8 x 3.1 mm
Wire stripping	max 9 mm
Operating temperature	-40 ÷ +130 °C

ELECTRICAL CHARACTERISTICS

Current	15 A
Voltage	500 V
impulse voltage	6 kV

MECHANICAL CHARACTERISTICS

Screw	M3
Recommended torque	0.5÷0.55 Nm / 4.5÷4.9 in.lbs

APPROVALS DATA



			UL 1059
Current	-	-	12 A factory / 12 A field
Voltage	-	-	600 V
Wire section	-	-	14 AWG
Torque	-	-	4.5 Lb-in
FILE	-	-	E178356

MATERIALS

Housing	PA - UL 94 V0
Screw	Galvanized steel
Clamp	Nickel-plated copper alloy
Terminal	Tin-plated copper alloy
SCIP Number	2b03b531-92df-4ed5-8cb8-d5dde059d488

COLOURS

Standard

On request



POLES	NAME	3D FILE
02	SVR02-10	File not available for this product
03	SVR03-10	File not available for this product
04	SVR04-10	File not available for this product
05	SVR05-10	File not available for this product
06	SVR06-10	File not available for this product
07	SVR07-10	File not available for this product
08	SVR08-10	File not available for this product
09	SVR09-10	File not available for this product
10	SVR10-10	File not available for this product
11	SVR11-10	File not available for this product
12	SVR12-10	File not available for this product