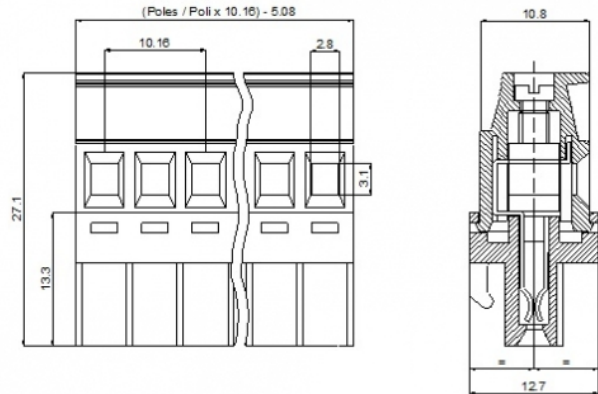
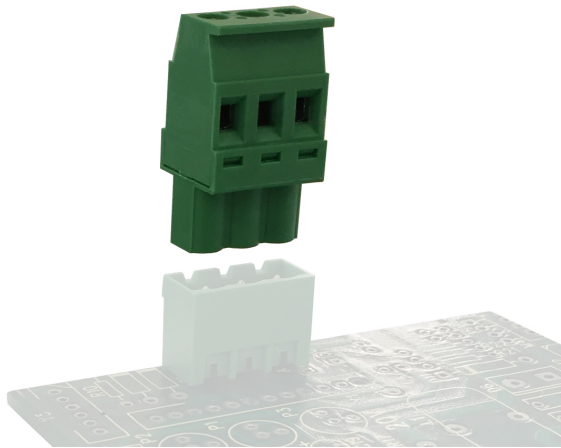


SV__-10,16-P



GENERAL INFORMATION

pitch	10,16 mm
Height	27.6 mm
Depth	13.5 mm
Dimensional class	Media
Wire section	2.5 mm ² / 14 AWG
Clamp opening size	2.8 x 3.1 mm
Wire stripping	max 9 mm
Operating temperature	-40 ÷ +130 °C

ELECTRICAL CHARACTERISTICS

Current	16 A
Voltage	500 V
impulse voltage	6 kV

MECHANICAL CHARACTERISTICS

Screw	M3
Recommended torque	0.5÷0.55 Nm / 4.5÷4.9 in.lbs

APPROVALS DATA



	EN 61984	EN 61984	UL 1059
Current	16 A	15 A	12 A factory / 12 A field
Voltage	500 V	500 V	600 V
Wire section	2.5 mm ²	2.5 mm ²	14 AWG
Torque	0.5 Nm	0.5 Nm	4.5 Lb-in
FILE	CA02.04178	40005779	E178356

MATERIALS

Housing	PA - UL 94 V0
Screw	Galvanized steel
Clamp	Nickel-plated copper alloy
Terminal	Nickel-plated copper alloy
SCIP Number	269cc4c7-8d06-4994-abfa-5163d2b356bd

COLOURS

Standard



On request



POLES	NAME	3D FILE
02	SV02-10,16-P	File available
03	SV03-10,16-P	File available
04	SV04-10,16-P	File available
05	SV05-10,16-P	File available
06	SV06-10,16-P	File available
07	SV07-10,16-P	File not available for this product
08	SV08-10,16-P	File not available for this product
09	SV09-10,16-P	File not available for this product
10	SV10-10,16-P	File not available for this product
11	SV11-10,16-P	File not available for this product
12	SV12-10,16-P	File not available for this product