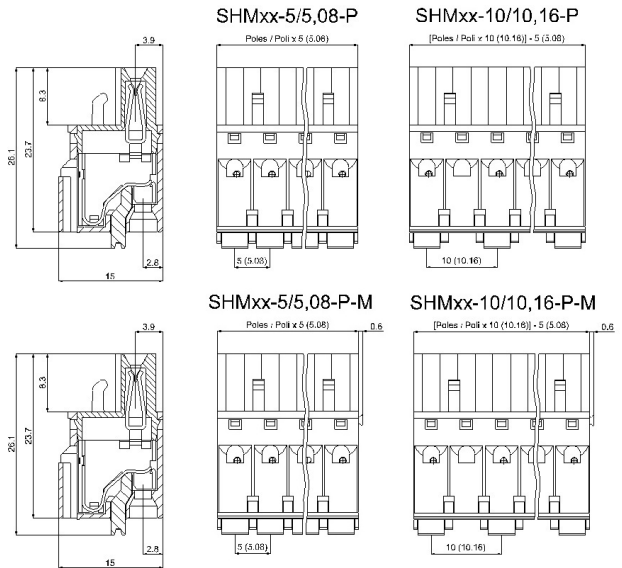
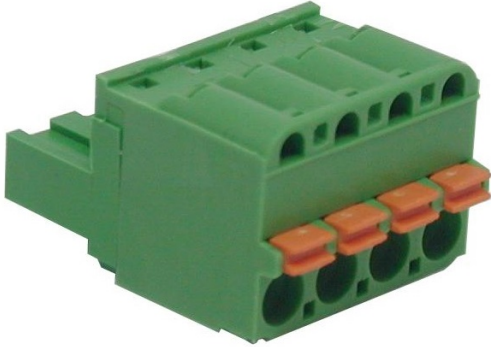


# SHM\_\_-10,16-P



## GENERAL INFORMATION

pitch	10,16 mm
Height	15 mm
Depth	23.7 mm
Dimensional class	Media
Wire section	2.5 mm <sup>2</sup> / 14 AWG
Wire stripping	max 10 mm
Operating temperature	-40 ÷ +130 °C

## ELECTRICAL CHARACTERISTICS

Current	16 A
Voltage	500 V

## MECHANICAL CHARACTERISTICS

## APPROVALS DATA



FILE	-	UL 1059
	-	16 A factory / 16 A field
	-	600 V
	-	12 AWG
	-	-
	-	E178356

## MATERIALS

Housing	PA - UL 94 V0
Screw	-
Clamp	-
Terminal	-

## COLOURS

Standard



On request



POLES	NAME	3D FILE
02	SHM02-10,16-P	File not available for this product
03	SHM03-10,16-P	File not available for this product
04	SHM04-10,16-P	File not available for this product
05	SHM05-10,16-P	File not available for this product
06	SHM06-10,16-P	File not available for this product
07	SHM07-10,16-P	File not available for this product
08	SHM08-10,16-P	File not available for this product
09	SHM09-10,16-P	File not available for this product
10	SHM10-10,16-P	File not available for this product
11	SHM11-10,16-P	File not available for this product
12	SHM12-10,16-P	File not available for this product