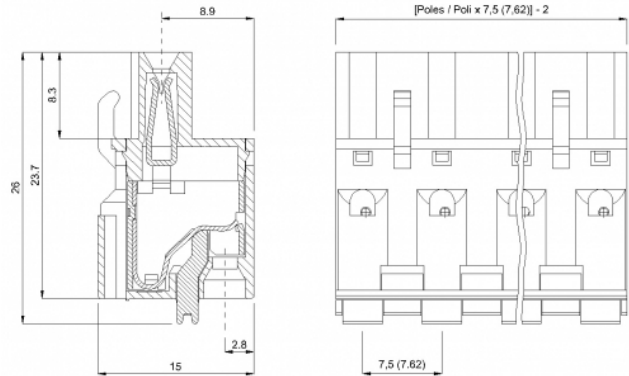
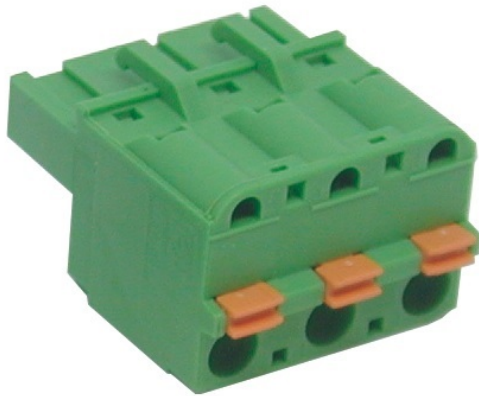


SHM__-7,62



GENERAL INFORMATION

pitch	7,62 mm
Height	15 mm
Depth	23.7 mm
Dimensional class	Media
Wire section	2.5 mm ² / 14 AWG
Clamp opening size	-
Wire stripping	max 10 mm
Operating temperature	-40 ÷ +105 °C

ELECTRICAL CHARACTERISTICS

Current	15 A
Voltage	500 V
impulse voltage	6 kV

MECHANICAL CHARACTERISTICS

Screw	-
Recommended torque	-

APPROVALS DATA



			UL 1059
Current	-	-	11 A factory / 11 A field
Voltage	-	-	300V (B,D) V
Wire section	-	-	14 AWG
Torque	-	-	-
FILE	-	-	E178356

MATERIALS

Housing	PA - UL 94 V0
Screw	-
Clamp	-
Terminal	Tin-plated copper alloy

COLOURS

Standard

On request

GN

GY

BK

BL

RD

YL

OG

POLES	NAME	3D FILE
02	SHM02-7,62	File not available for this product
03	SHM03-7,62	File not available for this product
04	SHM04-7,62	File not available for this product
05	SHM05-7,62	File not available for this product
06	SHM06-7,62	File not available for this product
07	SHM07-7,62	File not available for this product
08	SHM08-7,62	File not available for this product
09	SHM09-7,62	File not available for this product
10	SHM10-7,62	File not available for this product
11	SHM11-7,62	File not available for this product
12	SHM12-7,62	File not available for this product