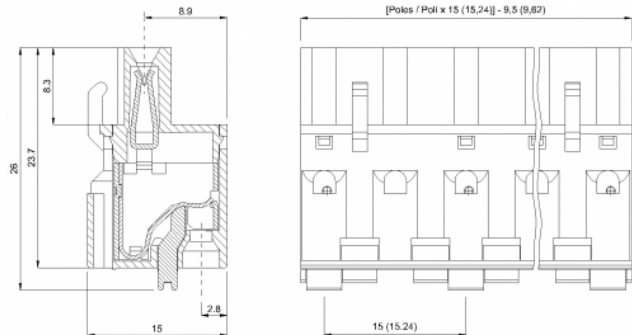
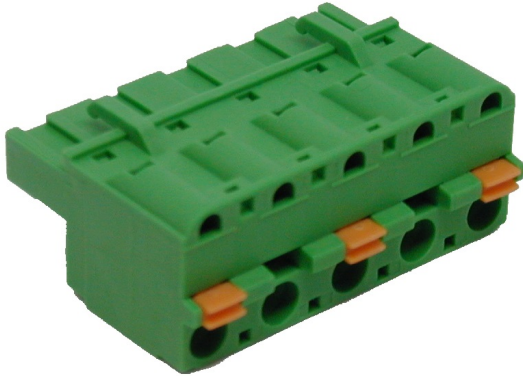


SHM__-15



GENERAL INFORMATION

pitch	15 mm
Height	15 mm
Depth	23.7 mm
Dimensional class	Media
Wire section	2.5 mm ² / 14 AWG
Clamp opening size	-
Wire stripping	max 10 mm
Operating temperature	-40 ÷ +130 °C

ELECTRICAL CHARACTERISTICS

Current	16 A
Voltage	1000 V
Test Voltage	6 kVrms/60s

MECHANICAL CHARACTERISTICS

Screw	-
Recommended torque	-

APPROVALS DATA



Current	-	-	UL 1059
Voltage	-	-	16 A factory / 16 A field
Wire section	-	-	600 V
Torque	-	-	12 ÷ 30 AWG
FILE	-	-	-
			E178356

MATERIALS

Housing	PA - UL 94 V0
Screw	-
Clamp	-
Terminal	Tin-plated copper alloy

COLOURS

Standard

On request



POLES	NAME	3D FILE
02	SHM02-15	File not available for this product
03	SHM03-15	File not available for this product
04	SHM04-15	File not available for this product
05	SHM05-15	File not available for this product
06	SHM06-15	File not available for this product
07	SHM07-15	File not available for this product
08	SHM08-15	File not available for this product