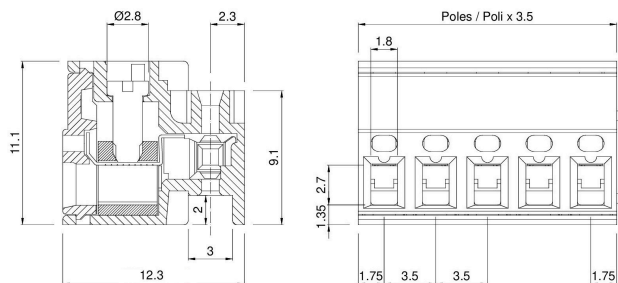
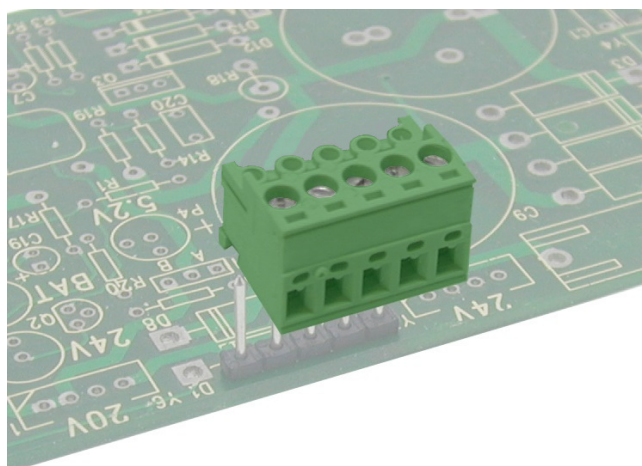


SHCS__-3,5-Q



GENERAL INFORMATION

pitch	3,5 mm
Height	11.1 mm
Depth	12.3 mm
Dimensional class	Bassa
Wire section	2,5 mm ² / 14 AWG
Clamp opening size	1,8 x 2,7 mm
Wire stripping	max 6,5 mm
Operating temperature	-40 ÷ +130 °C

ELECTRICAL CHARACTERISTICS

Current	15 A
Voltage	250 V
impulse voltage	2.5 kV

MECHANICAL CHARACTERISTICS

Screw	M2
Recommended torque	0,25 Nm / 2,3 in.lbs

APPROVALS DATA



Current	-	-	-
Voltage	-	-	-
Wire section	-	-	-
Torque	-	-	-
FILE	-	-	-

MATERIALS

Housing	PA - UL 94 V0
Screw	Galvanized steel
Clamp	Nickel-plated copper alloy
Terminal	Copper alloy
SCIP Number	8f3ed649-5dcd-4973-a9c9-d71b7f8f530d

COLOURS

Standard

On request



POLES	NAME	3D FILE
02	SHCS02-3,5-Q	File available
03	SHCS03-3,5-Q	File available
04	SHCS04-3,5-Q	File available
05	SHCS05-3,5-Q	File available
06	SHCS06-3,5-Q	File not available for this product
07	SHCS07-3,5-Q	File not available for this product
08	SHCS08-3,5-Q	File not available for this product
09	SHCS09-3,5-Q	File not available for this product
10	SHCS10-3,5-Q	File not available for this product
11	SHCS11-3,5-Q	File not available for this product
12	SHCS12-3,5-Q	File not available for this product
13	SHCS13-3,5-Q	File not available for this product
14	SHCS14-3,5-Q	File not available for this product
15	SHCS15-3,5-Q	File not available for this product
16	SHCS16-3,5-Q	File not available for this product
17	SHCS17-3,5-Q	File not available for this product
18	SHCS18-3,5-Q	File not available for this product
19	SHCS19-3,5-Q	File not available for this product
20	SHCS20-3,5-Q	File not available for this product
21	SHCS21-3,5-Q	File not available for this product
22	SHCS22-3,5-Q	File not available for this product
23	SHCS23-3,5-Q	File not available for this product
24	SHCS24-3,5-Q	File not available for this product