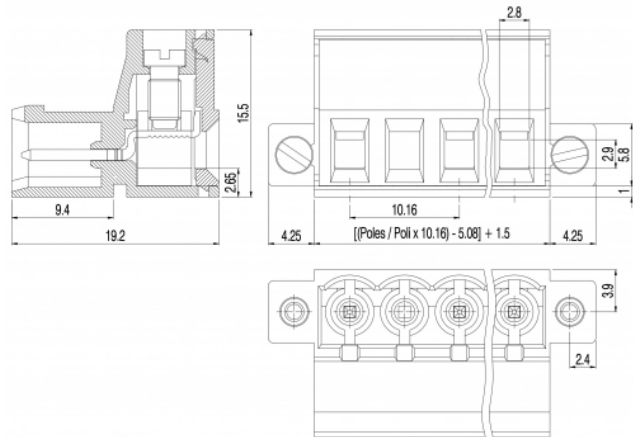
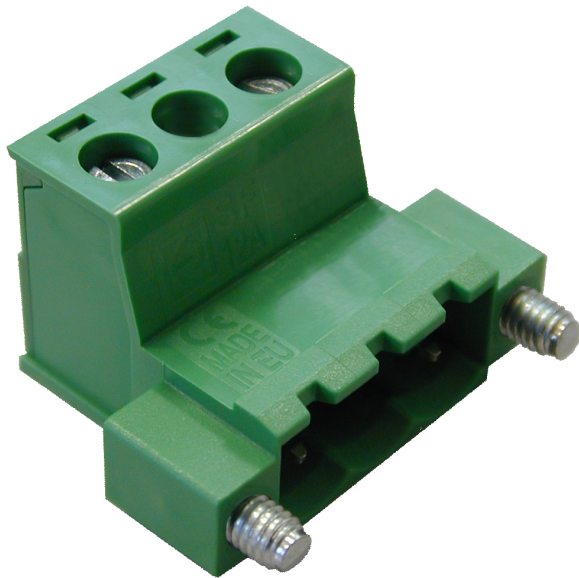


# SF\_\_-10,16-KV



## GENERAL INFORMATION

pitch	10,16 mm
Height	15.5 mm
Depth	19.2 mm
Dimensional class	Media
Wire section	2.5 mm <sup>2</sup> / 14 AWG
Clamp opening size	2.8 x 2.9 mm
Wire stripping	max 8 mm
Operating temperature	-40 ÷ +130 °C

## ELECTRICAL CHARACTERISTICS

Current	15 A
Voltage	500 V
impulse voltage	6 kV

## MECHANICAL CHARACTERISTICS

Screw	M3
Recommended torque	0.5÷0.55 Nm / 4.5÷4.9 in.lbs

## APPROVALS DATA



Current	-	-	<b>UL 1059</b>
Voltage	-	-	22 A factory / 20 A field
Wire section	-	-	600 V
Torque	-	-	12 AWG
FILE	-	-	4.5 Lb-in
			E178356

## MATERIALS

Housing	PA - UL 94 V0
Screw	Galvanized steel
Clamp	Nickel-plated copper alloy

Terminal  
 SCIP Number

Nickel-plated copper alloy  
 e27c55ac-423d-4d46-808e-20cdb05c39b8

**COLOURS**

Standard



On request



POLES	NAME	3D FILE
02	SF02-10,16-KV	File not available for this product
03	SF03-10,16-KV	File not available for this product
04	SF04-10,16-KV	File not available for this product
05	SF05-10,16-KV	File not available for this product
06	SF06-10,16-KV	File not available for this product
07	SF07-10,16-KV	File not available for this product
08	SF08-10,16-KV	File not available for this product
09	SF09-10,16-KV	File not available for this product
10	SF10-10,16-KV	File not available for this product
11	SF11-10,16-KV	File not available for this product