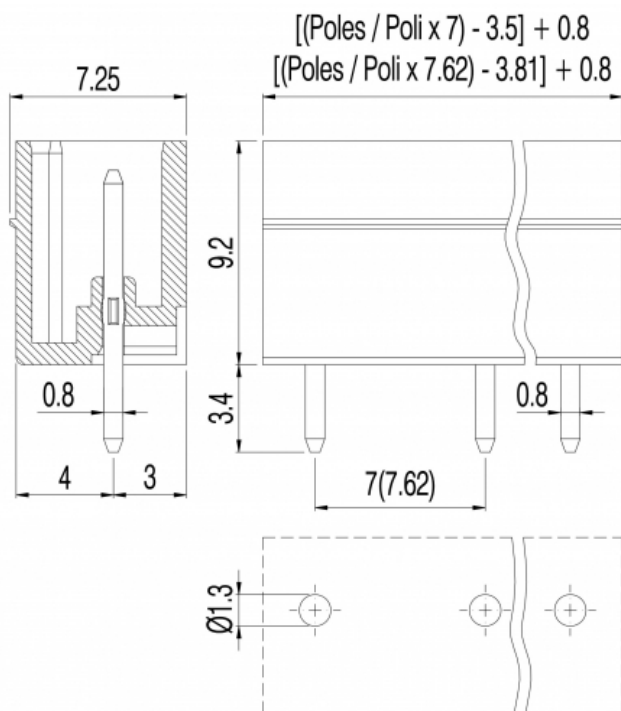
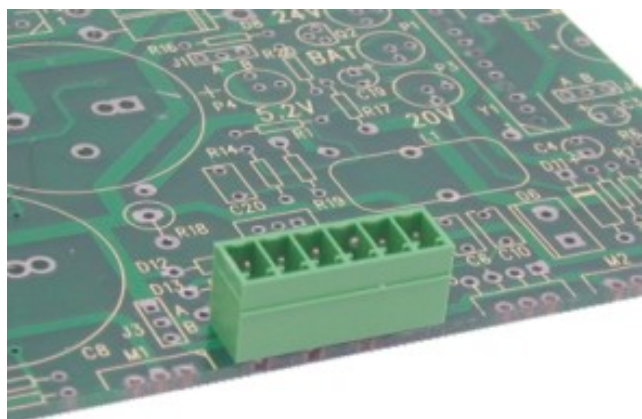


PV__-7,62-V-P-S



GENERAL INFORMATION

| | |
|-----------------------|---------------|
| pitch | 7,62 mm |
| Height | 9.2 mm |
| Depth | 7.25 mm |
| Dimensional class | Bassa |
| Wire section | - |
| Clamp opening size | - |
| Wire stripping | - |
| Operating temperature | -40 ÷ +130 °C |

ELECTRICAL CHARACTERISTICS

| | |
|-----------------|-------|
| Current | 11 A |
| Voltage | 500 V |
| impulse voltage | 6 kV |

MECHANICAL CHARACTERISTICS

| | |
|--------------------|---|
| Screw | - |
| Recommended torque | - |

APPROVALS DATA



| | | EN 61984 | UL 1059 |
|--------------|---|----------|---------------------------|
| Current | - | 11 A | 11 A factory / 11 A field |
| Voltage | - | 400 V | 300 V |
| Wire section | - | - | - |
| Torque | - | - | - |
| FILE | - | 40048261 | E178356 |

MATERIALS

| | |
|-------------|--------------------------------------|
| Housing | PA - UL 94 V0 |
| Screw | - |
| Clamp | - |
| Terminal | Tin-plated copper alloy |
| SCIP Number | 892ed63d-670d-4367-9365-34dfcaff593c |

COLOURS



| POLES | NAME | 3D FILE |
|-------|-----------------|-------------------------------------|
| 02 | PV02-7,62-V-P-S | File not available for this product |
| 03 | PV03-7,62-V-P-S | File not available for this product |
| 04 | PV04-7,62-V-P-S | File not available for this product |
| 05 | PV05-7,62-V-P-S | File not available for this product |
| 06 | PV06-7,62-V-P-S | File not available for this product |
| 07 | PV07-7,62-V-P-S | File not available for this product |
| 08 | PV08-7,62-V-P-S | File not available for this product |
| 09 | PV09-7,62-V-P-S | File not available for this product |
| 10 | PV10-7,62-V-P-S | File not available for this product |
| 11 | PV11-7,62-V-P-S | File not available for this product |
| 12 | PV12-7,62-V-P-S | File not available for this product |