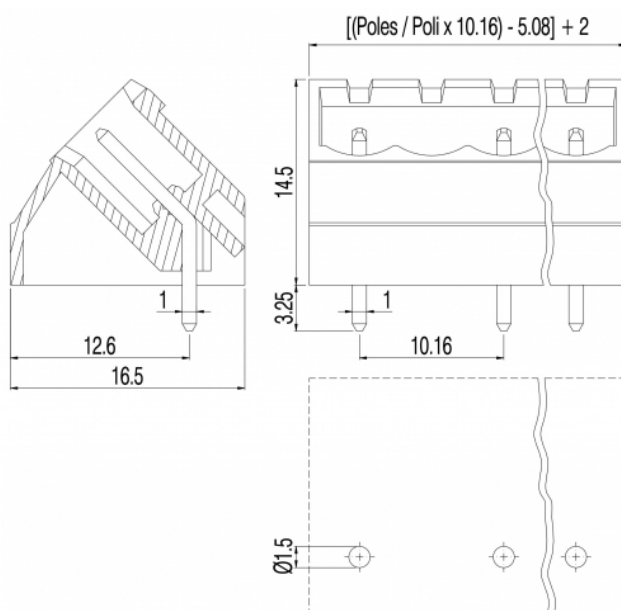


# PI\_\_-10,16-IQ-P



### GENERAL INFORMATION

pitch	10,16 mm
Height	14.5 mm
Depth	16.5 mm
Dimensional class	Media
Wire section	-
Clamp opening size	-
Wire stripping	-
Operating temperature	-40 ÷ +130 °C

### ELECTRICAL CHARACTERISTICS

Current	15 A
Voltage	500 V
impulse voltage	6 kV

### MECHANICAL CHARACTERISTICS

Screw	-
Recommended torque	-

### APPROVALS DATA



	<b>EN 61984</b>		<b>UL 1059</b>
Current	15 A	-	12 A factory / 12 A field
Voltage	500 V	-	600 V
Wire section	-	-	-
Torque	-	-	-
FILE	CA02.04178	-	E178356

### MATERIALS

Housing	PA - UL 94 V0
Screw	-
Clamp	-
Terminal	Tin-plated copper alloy

**COLOURS**

Standard

On request



POLES	NAME	3D FILE
02	PI02-10,16-IQ-P	File not available for this product
03	PI03-10,16-IQ-P	File not available for this product
04	PI04-10,16-IQ-P	File not available for this product
05	PI05-10,16-IQ-P	File not available for this product
06	PI06-10,16-IQ-P	File not available for this product
07	PI07-10,16-IQ-P	File not available for this product
08	PI08-10,16-IQ-P	File not available for this product
09	PI09-10,16-IQ-P	File not available for this product
10	PI10-10,16-IQ-P	File not available for this product
11	PI11-10,16-IQ-P	File not available for this product
12	PI12-10,16-IQ-P	File not available for this product