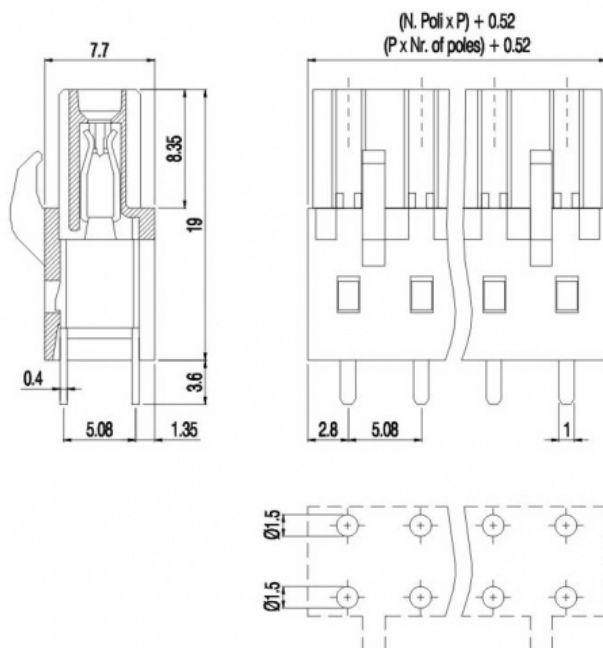
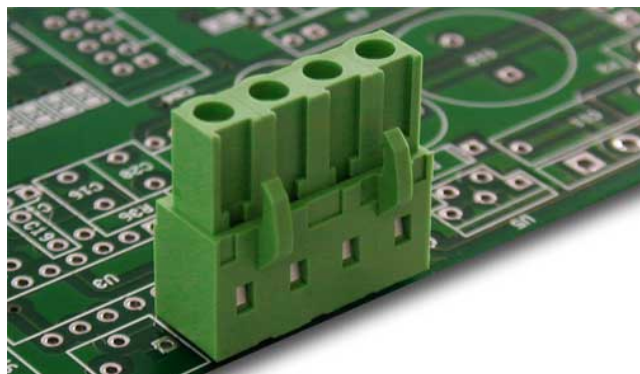


PF__-5,08-V



GENERAL INFORMATION

| | |
|-----------------------|---------------|
| pitch | 5,08 mm |
| Height | 19 mm |
| Depth | 7.7 mm |
| Dimensional class | Media |
| Wire section | - |
| Clamp opening size | - |
| Wire stripping | - |
| Operating temperature | -40 ÷ +105 °C |

ELECTRICAL CHARACTERISTICS

| | |
|-----------------|-------|
| Current | 16 A |
| Voltage | 250 V |
| impulse voltage | 4 kV |

MECHANICAL CHARACTERISTICS

| | |
|--------------------|---|
| Screw | - |
| Recommended torque | - |

APPROVALS DATA



| | | | |
|--------------|---|---|---------------------------|
| Current | - | - | UL 1059 |
| Voltage | - | - | 22 A factory / 20 A field |
| Wire section | - | - | 300 V |
| Torque | - | - | - |
| FILE | - | - | E178356 |

MATERIALS

| | |
|---------|---------------|
| Housing | PA - UL 94 V0 |
| Screw | - |

Clamp
Terminal

Tin-plated copper alloy

COLOURS

Standard



On request



POLES

NAME

3D FILE

| | | |
|----|-------------|-------------------------------------|
| 02 | PF02-5,08-V | File available |
| 03 | PF03-5,08-V | File available |
| 04 | PF04-5,08-V | File not available for this product |
| 05 | PF05-5,08-V | File not available for this product |
| 06 | PF06-5,08-V | File not available for this product |
| 07 | PF07-5,08-V | File not available for this product |
| 08 | PF08-5,08-V | File not available for this product |
| 09 | PF09-5,08-V | File not available for this product |
| 10 | PF10-5,08-V | File not available for this product |
| 11 | PF11-5,08-V | File not available for this product |
| 12 | PF12-5,08-V | File not available for this product |