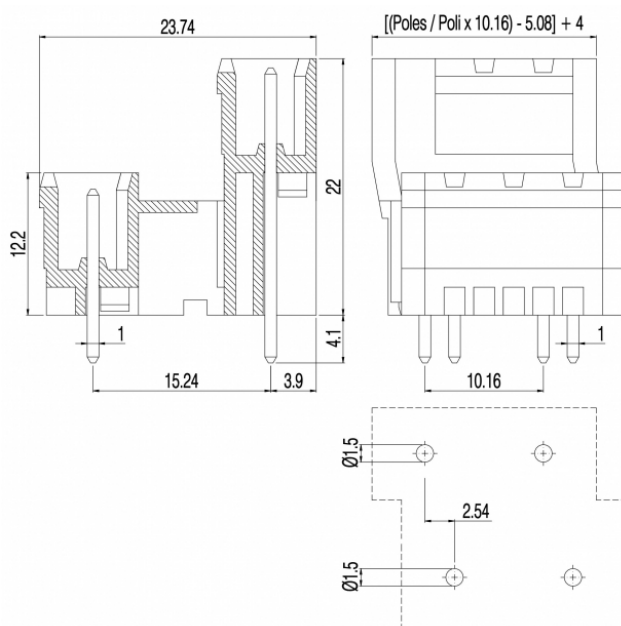
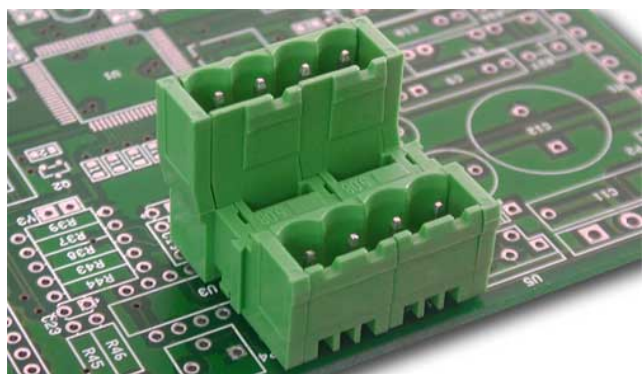


PDSV__-10,16-V-P



GENERAL INFORMATION

pitch	10,16 mm
Height	22 mm
Depth	23.74 mm
Dimensional class	Media
Wire section	-
Clamp opening size	-
Wire stripping	-
Operating temperature	-40 ÷ +130 °C

ELECTRICAL CHARACTERISTICS

Current	15 A
Voltage	500 V
impulse voltage	6 kV

MECHANICAL CHARACTERISTICS

Screw	-
Recommended torque	-

APPROVALS DATA



	EN 61984	EN 61984	UL 1059
Current	15 A	15 A	12 A factory / 12 A field
Voltage	500 V	500 V	600 V
Wire section	-	-	-
Torque	-	-	-
FILE	CA02.04178	40005779	E178356

MATERIALS

Housing	PA - UL 94 V0
Screw	-
Clamp	-

Terminal

Tin-plated copper alloy

COLOURS

Standard



On request



POLES

NAME

3D FILE

01	PDSV01-10,16-V-P	File not available for this product
02	PDSV02-10,16-V-P	File not available for this product