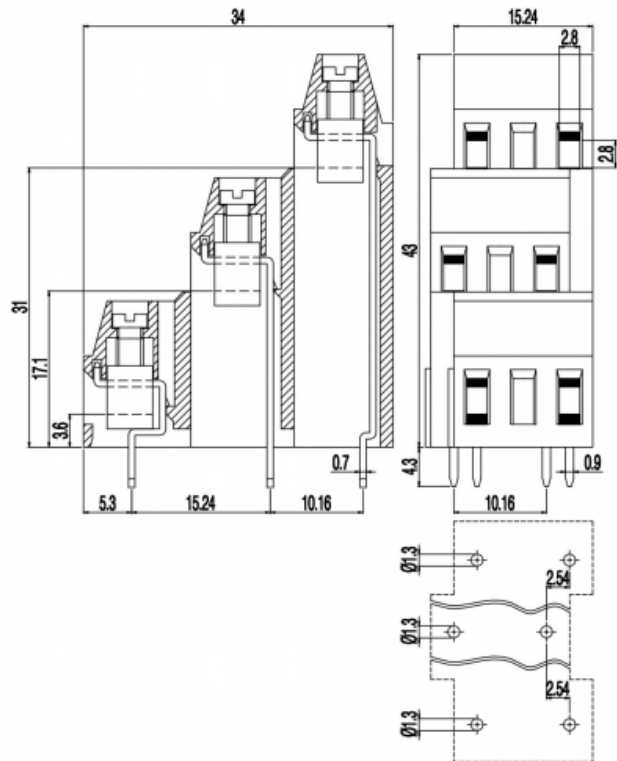


MVT25_-10,16-V



GENERAL INFORMATION

pitch	10,16 mm
Height	43 mm
Depth	34 mm
Dimensional class	Media
Wire section	2.5 mm ² / 14 AWG
Clamp opening size	2.8 x 2.8 mm
Wire stripping	max 8 mm
Operating temperature	-40 ÷ +130 °C

ELECTRICAL CHARACTERISTICS

Current	16 A
Voltage	750 V
impulse voltage	3 kV

MECHANICAL CHARACTERISTICS

Screw	M3
Recommended torque	0.5÷0.55 Nm / 4.5÷4.9 in.lbs

APPROVALS DATA



	EN 60998-1	EN 60998-1	UL 1059
Current	16 A	16 A	16 A factory / 15 A field
Voltage	750 V	750 V	300 V
Wire section	2.5 mm ²	2.5 mm ²	14 AWG
Torque	0.5 Nm	0.5 Nm	4.5 Lb-in

FILE EP149 40023956 E178356

MATERIALS

Housing PA - UL 94 V0
 Screw Galvanized steel
 Clamp Nickel-plated copper alloy
 Terminal Tin-plated copper alloy
 SCIP Number 0890509a-4eed-4858-be0a-55b27111b244

COLOURS

Standard



On request



POLES

NAME

3D FILE

1	MVT251-10,16-V	File not available for this product
2	MVT252-10,16-V	File not available for this product