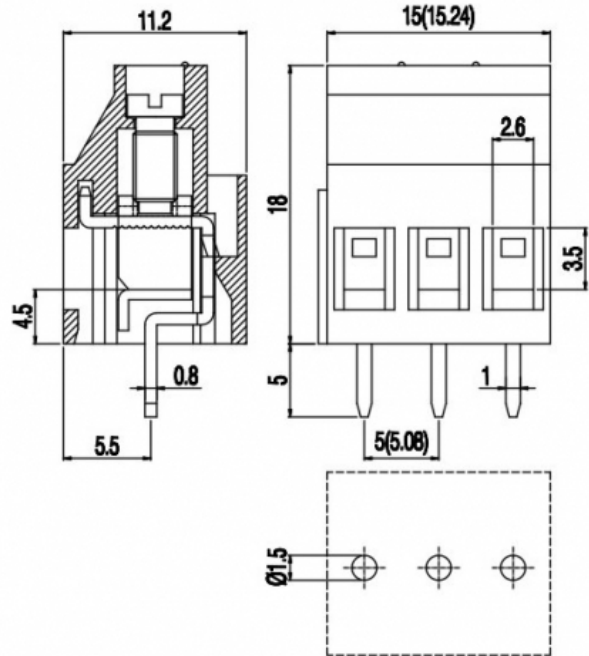
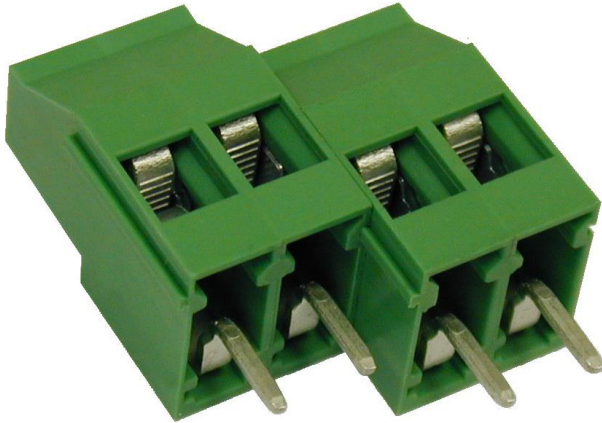


MVST25_-5,08-V



GENERAL INFORMATION

pitch	5,08 mm
Height	18 mm
Depth	11.2 mm
Dimensional class	Media
Wire section	2.5 mm ² / 14 AWG
Clamp opening size	2.8 x 3.5 mm
Wire stripping	max 9 mm
Operating temperature	-40 ÷ +105 °C

ELECTRICAL CHARACTERISTICS

Current	24 A
Voltage	250 V
Test Voltage	2 kVrms/60s

MECHANICAL CHARACTERISTICS

Screw	M2.5
Recommended torque	0.4÷0.44 Nm / 3.5÷3.9 in.lbs

APPROVALS DATA



Current	-	-	20 A factory / - A field
Voltage	-	-	300 V
Wire section	-	-	12 ÷ 24 AWG
Torque	-	-	3.5 Lb-in
FILE	-	-	E178356

MATERIALS

Housing
Screw
Clamp
Terminal

PA - UL 94 V0
Galvanized steel
-
Tin-plated copper alloy

COLOURS

Standard

On request



POLES

NAME

3D FILE

2	MVST252-5,08-V	File not available for this product
3	MVST253-5,08-V	File not available for this product