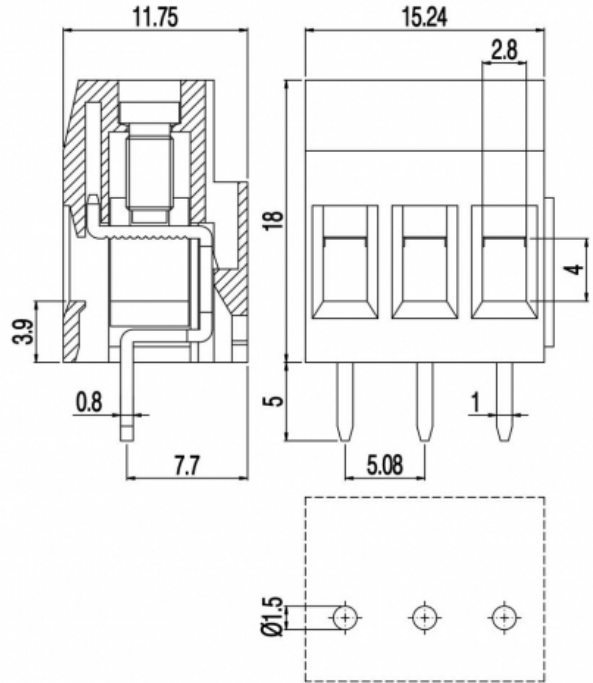
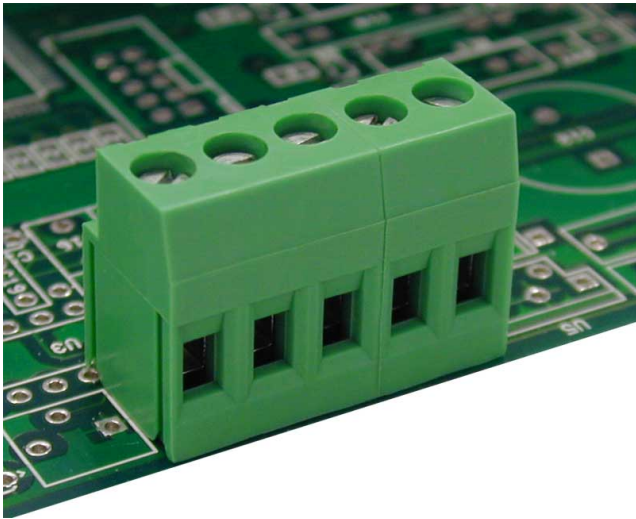


MVS25_-5,08-V



GENERAL INFORMATION

pitch	5,08 mm
Height	18 mm
Depth	11.75 mm
Dimensional class	Media
Wire section	2.5 mm ² / 14 AWG
Clamp opening size	2.8 x 4 mm
Wire stripping	max 8.5 mm
Operating temperature	-40 ÷ +130 °C

ELECTRICAL CHARACTERISTICS

Current	24 A
Voltage	450 V
impulse voltage	2,5 kV

MECHANICAL CHARACTERISTICS

Screw	M3
Recommended torque	0.8÷0.88 Nm / 7.2÷7.9 in.lbs

APPROVALS DATA



	EN 60998-1		
Current	24 A	-	-
Voltage	450 V	-	-
Wire section	2.5 mm ²	-	-
Torque	0.8 Nm	-	-
FILE	CA02.00599	-	-

MATERIALS

Housing	PA - UL 94 V0
Screw	Galvanized steel
Clamp	Nickel-plated copper alloy
Terminal	Tin-plated copper alloy
SCIP Number	543da972-1465-4e54-b346-2839c48b6deb

COLOURS

Standard

On request



POLES	NAME	3D FILE
2	MVS252-5,08-V	File available
3	MVS253-5,08-V	File not available for this product