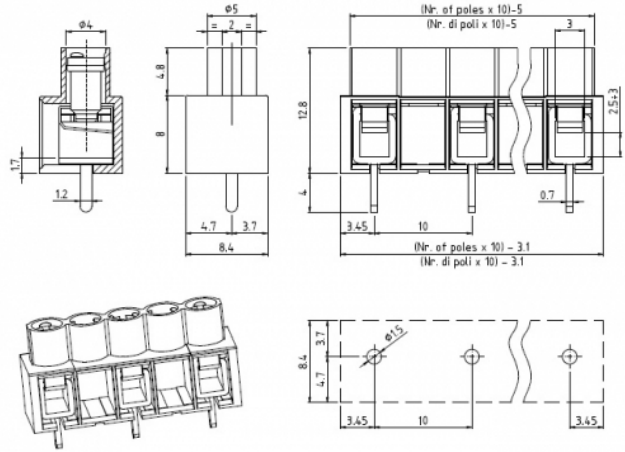
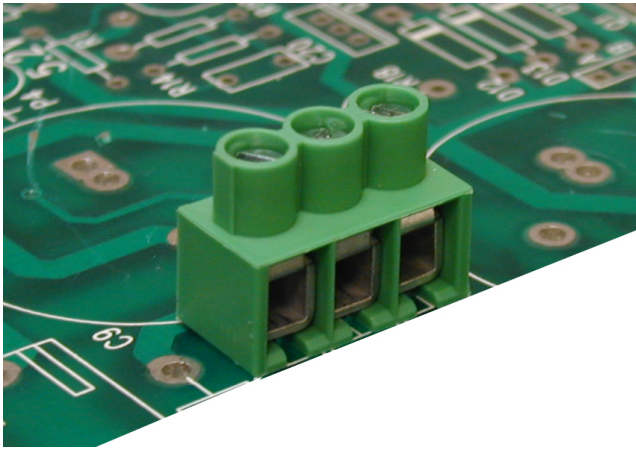


MVE26_-10-V



GENERAL INFORMATION

pitch	10 mm
Height	12.8 mm
Depth	8.4 mm
Dimensional class	Media
Wire section	2.5 mm ² / 12 AWG
Clamp opening size	2.5 x 3 mm
Wire stripping	max 7.5 mm
Operating temperature	-40 ÷ +130 °C

ELECTRICAL CHARACTERISTICS

Current	24 A
Voltage	1000 V
impulse voltage	3 kV

MECHANICAL CHARACTERISTICS

Screw	M3
Recommended torque	0.5÷0.55 Nm / 4.5÷4.9 in.lbs

APPROVALS DATA



		EN 60998-1	UL 1059
Current	-	24 A	26 A factory / 20 A field
Voltage	-	1000 V	300V (B,C) V
Wire section	-	2.5 mm ²	12 AWG
Torque	-	0.5 Nm	4.5 Lb-in
FILE	-	40019705	E178356

MATERIALS

Housing	PA - UL 94 V0
Screw	Galvanized steel
Clamp	Tin-plated copper alloy
Terminal	Tin-plated copper alloy

COLOURS

Standard

On request



POLES	NAME	3D FILE
2	MVE262-10-V	File not available for this product
3	MVE263-10-V	File not available for this product
4	MVE264-10-V	File not available for this product
5	MVE265-10-V	File not available for this product
6	MVE266-10-V	File not available for this product
7	MVE267-10-V	File not available for this product
8	MVE268-10-V	File not available for this product
9	MVE269-10-V	File not available for this product
10	MVE2610-10-V	File not available for this product
11	MVE2611-10-V	File not available for this product
12	MVE2612-10-V	File not available for this product