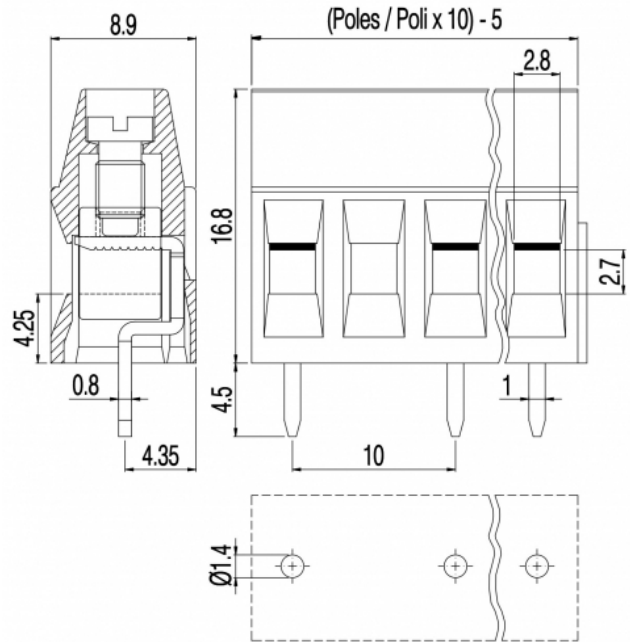


# MVE25\_-10-V



### GENERAL INFORMATION

pitch	10 mm
Height	16.8 mm
Depth	8.9 mm
Dimensional class	Media
Wire section	2.5 mm <sup>2</sup> / 14 AWG
Clamp opening size	2.8 x 2.7 mm
Wire stripping	max 7 mm
Operating temperature	-40 ÷ +130 °C

### ELECTRICAL CHARACTERISTICS

Current	16 A
Voltage	750 V
impulse voltage	3 kV

### MECHANICAL CHARACTERISTICS

Screw	M3
Recommended torque	0.5÷0.55 Nm / 4.5÷4.9 in.lbs

### APPROVALS DATA



	EN 60998-1	EN 60998-1	UL 1059
Current	16 A	16 A	16 A factory / 15 A field
Voltage	750 V	750 V	600 V
Wire section	2.5 mm <sup>2</sup>	2.5 mm <sup>2</sup>	14 AWG
Torque	0.5 Nm	0.5 Nm	4.5 Lb-in
FILE	EP149	40023956	E178356

### MATERIALS

Housing	PA - UL 94 V0
Screw	Galvanized steel

Clamp  
Terminal  
SCIP Number

Nickel-plated copper alloy  
Tin-plated copper alloy  
f1067497-248c-4560-9934-2bc3dfa74a42

**COLOURS**

Standard

On request



POLES	NAME	3D FILE
1	MVE251-10-V	File not available for this product
2	MVE252-10-V	File available
3	MVE253-10-V	File available
4	MVE254-10-V	File available
5	MVE255-10-V	File available
6	MVE256-10-V	File available