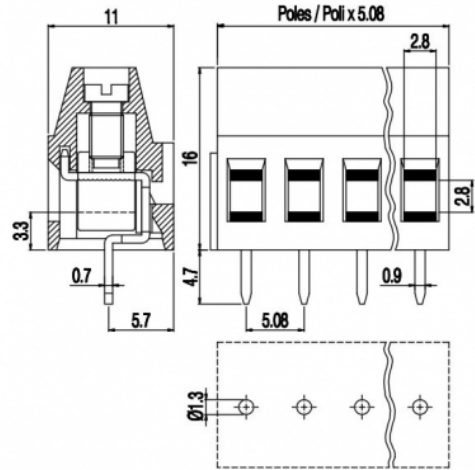


MV25_-5,08-V



Version with antirotation pegs is available on 2 poles connections.
Disponibile per connessioni a 2 poli versioni con perni antitorsione.

GENERAL INFORMATION

pitch	5,08 mm
Height	16 mm
Depth	11 mm
Dimensional class	Media
Wire section	2.5 mm ² / 14 AWG
Clamp opening size	2.8 x 2.8 mm
Wire stripping	max 8 mm
Operating temperature	-40 ÷ +130 °C

ELECTRICAL CHARACTERISTICS

Current	16 A
Voltage	450 V
impulse voltage	2.5 kV

MECHANICAL CHARACTERISTICS

Screw	M3
Recommended torque	0.5÷0.55 Nm / 4.5÷4.9 in.lbs

APPROVALS DATA



	EN 60998-1	EN 60998-1	UL 1059
Current	16 A	16 A	16 A factory / 15 A field
Voltage	450 V	450 V	300 V
Wire section	2.5 mm ²	2.5 mm ²	14 AWG
Torque	0.5 Nm	0.5 Nm	4.5 Lb-in
FILE	EP149	40023956	E178356

MATERIALS

Housing	PA - UL 94 V0
Screw	Galvanized steel
Clamp	Nickel-plated copper alloy

Terminal
 SCIP Number

Tin-plated copper alloy
 0ab5c29e-2c2a-42d2-bc27-7c61f6570969

COLOURS

Standard



On request



POLES	NAME	3D FILE
2	MV252-5,08-V	File available
3	MV253-5,08-V	File available
4	MV254-5,08-V	File available
5	MV255-5,08-V	File available
6	MV256-5,08-V	File not available for this product
7	MV257-5,08-V	File not available for this product
8	MV258-5,08-V	File available
9	MV259-5,08-V	File available
10	MV2510-5,08-V	File available
11	MV2511-5,08-V	File not available for this product
12	MV2512-5,08-V	File not available for this product