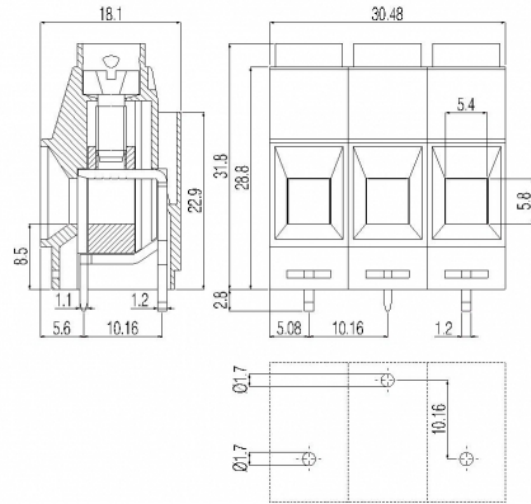
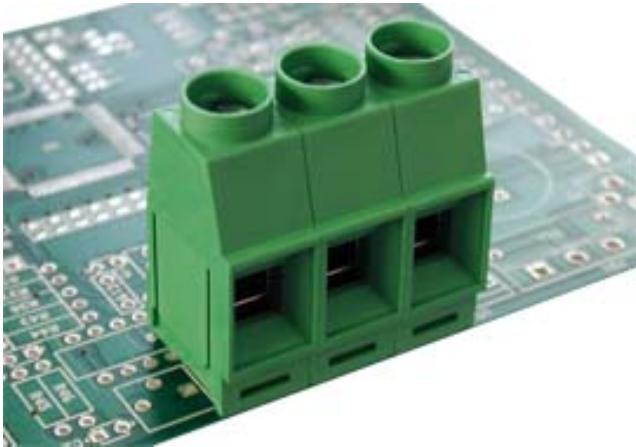


# MV10\_-10,16-V-E-A



## GENERAL INFORMATION

pitch	10,16 mm
Height	31.8 mm
Depth	18.1 mm
Dimensional class	Alta
Wire section	10 mm <sup>2</sup> / 8 AWG
Clamp opening size	5.4 x 5.8 mm
Wire stripping	max 15 mm
Operating temperature	-40 ÷ +130 °C

## ELECTRICAL CHARACTERISTICS

Current	42 A
Voltage	1000 V
impulse voltage	3 kV

## MECHANICAL CHARACTERISTICS

Screw	M4
Recommended torque	1.2÷1.5 Nm / 10.8÷13.6 in.lbs

## APPROVALS DATA



			<b>UL 1059</b>
Current	-	-	42 A factory / 42 A field
Voltage	-	-	600 V
Wire section	-	-	6 AWG
Torque	-	-	10.8 Lb-in
FILE	-	-	E178356

## MATERIALS

Housing	PA - UL 94 V0
Screw	Galvanized steel
Clamp	Nickel-plated copper alloy
Terminal	Tin-plated copper alloy
SCIP Number	0e22b4d0-f741-437c-bf88-e67efc1bf4a7

## COLOURS

Standard

On request

**GN**

**GY**

**BK**

**BL**

**RD**

**YL**

**OG**