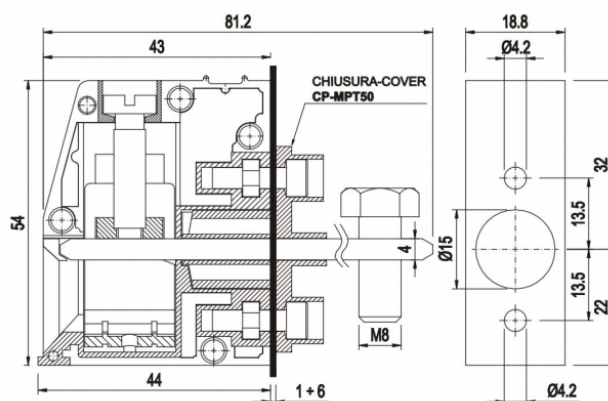
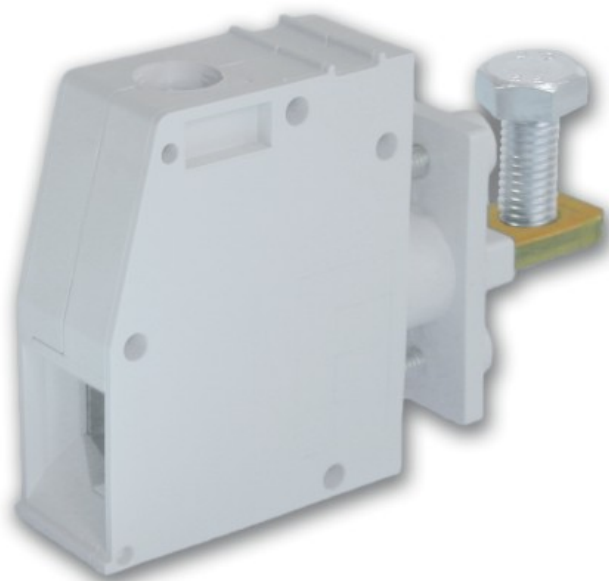


# MPT5018



## GENERAL INFORMATION

pitch	18,8 mm
Height	54 mm
Depth	43 mm
Dimensional class	n/a
Wire section	50 mm <sup>2</sup> / 1/0 AWG
Clamp opening size	-
Wire stripping	max 20 mm
Operating temperature	-40 ÷ +130 °C

## ELECTRICAL CHARACTERISTICS

Current	150 A
Voltage	1000 V
impulse voltage	3.5 kV

## MECHANICAL CHARACTERISTICS

Screw	M6
Recommended torque	6÷6.6 Nm / 54÷59.4 in.lbs

## APPROVALS DATA



	CSV	VDE	UL 1059
Current	-	-	-
Voltage	-	-	600 V
Wire section	-	-	1/0 AWG
Torque	-	-	54 Lb-in
FILE	-	-	E178356

## MATERIALS

Housing	PA - UL 94 V0
Screw	Galvanized steel
Clamp	-
Terminal	Copper alloy

**COLOURS**

Standard



On request



**POLES**

01

**NAME**

MPT5018

**3D FILE**

File available