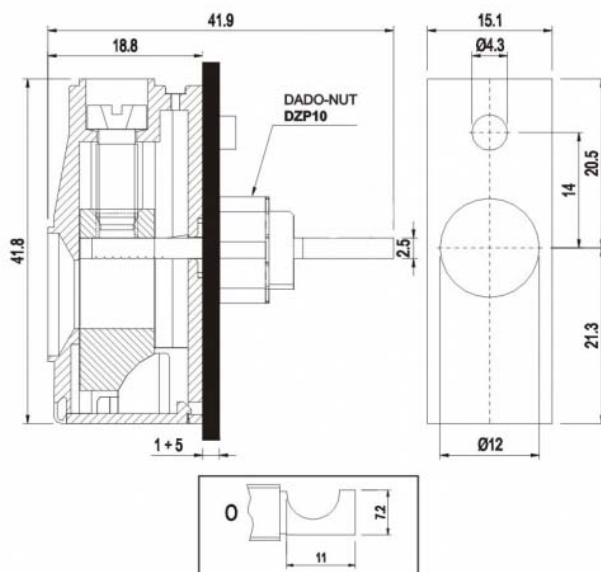


MPT2515-O



GENERAL INFORMATION

pitch	15,1 mm
Height	41.8 mm
Depth	18.8 mm
Dimensional class	n/a
Wire section	25 mm ² / 4 AWG
Clamp opening size	-
Wire stripping	max 28 mm
Operating temperature	-40 ÷ +130 °C

ELECTRICAL CHARACTERISTICS

Current	101 A
Voltage	750 V
Test Voltage	-

MECHANICAL CHARACTERISTICS

Screw	M5
Recommended torque	2÷2.2 Nm / 18÷19.8 in.lbs

APPROVALS DATA



		EN 60998-1	UL 1059
Current	-	101 A	101 A factory / 85 A field
Voltage	-	750 V	600 V
Wire section	-	25 mm ²	4 ÷ 28 AWG
Torque	-	2 Nm	18 Lb-in
FILE	-	40016489	E178356

MATERIALS

Housing
Screw
Clamp
Terminal

PA - UL 94 V0
Galvanized steel
Nickel-plated copper alloy
Tin-plated copper alloy

COLOURS

Standard



On request



POLES

01

NAME

MPT2515-O

3D FILE

File available