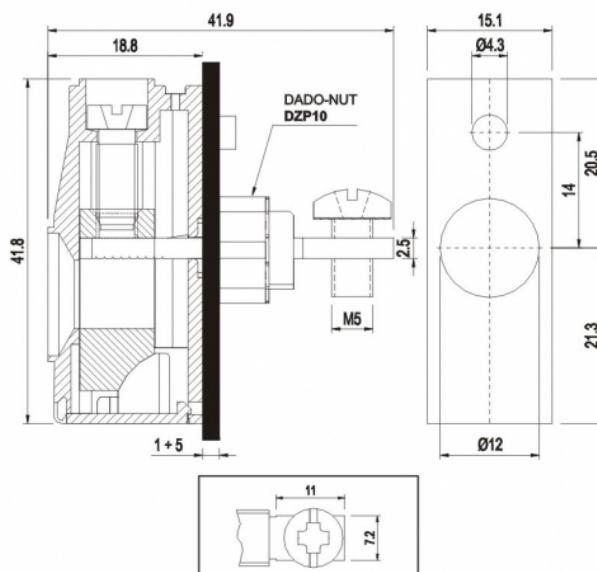


MPT2515



GENERAL INFORMATION

pitch	15,1 mm
Height	41,8 mm
Depth	18,8 mm
Dimensional class	n/a
Wire section	25 mm ² / 4 AWG
Clamp opening size	-
Wire stripping	max 17 mm
Operating temperature	-40 ÷ +130 °C

ELECTRICAL CHARACTERISTICS

Current	101 A
Voltage	750 V
Test Voltage	3 kVrms/60s

MECHANICAL CHARACTERISTICS

Screw	M5
Recommended torque	2÷2.2 Nm / 18÷19.8 in.lbs

APPROVALS DATA



Current	-	EN 60998-1	101 A	UL 1059	101 A factory / 85 A field
Voltage	-		750 V		600 V
Wire section	-		25 mm ²		4 ÷ 28 AWG
Torque	-		2 Nm		18 Lb-in
FILE	-		40016489		E178356

MATERIALS

Housing	PA - UL 94 V0
Screw	Galvanized steel
Clamp	Nickel-plated copper alloy
Terminal	Tin-plated copper alloy
SCIP Number	4c815278-76c4-4223-9c6e-f54abec5c32a

COLOURS



On request



POLES

01

NAME

MPT2515

3D FILE

File available