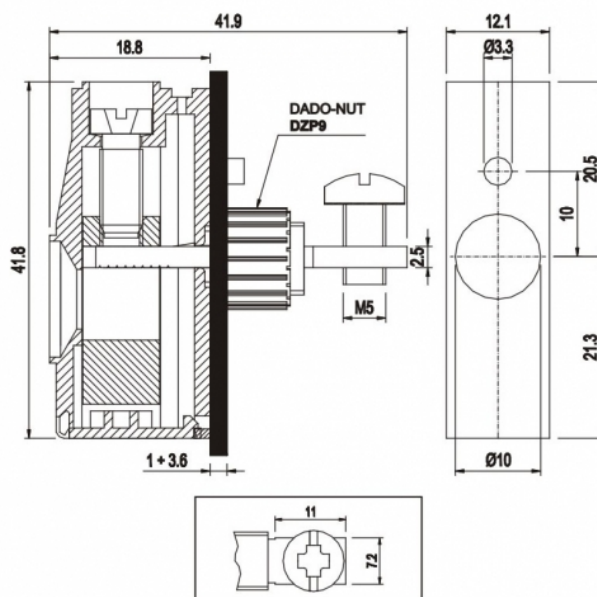


MPT1612



GENERAL INFORMATION

pitch	12,1 mm
Height	41.8 mm
Depth	18.8 mm
Dimensional class	n/a
Wire section	16 mm ² / 6 AWG
Clamp opening size	-
Wire stripping	max 17 mm
Operating temperature	-40 ÷ +130 °C

ELECTRICAL CHARACTERISTICS

Current	76 A
Voltage	450 V
Test Voltage	2.5 kVrms/60s

MECHANICAL CHARACTERISTICS

Screw	M5
Recommended torque	2÷2.2 Nm / 18÷19.8 in.lbs

APPROVALS DATA



		EN 60998-1	UL 1059
Current	-	76 A	85 A factory / 85 A field
Voltage	-	450 V	600 V
Wire section	-	16 mm ²	4 ÷ 28 AWG
Torque	-	2 Nm	18 Lb-in
FILE	-	40016489	E178356

MATERIALS

Housing	PA - UL 94 V0
Screw	Galvanized steel
Clamp	Nickel-plated copper alloy
Terminal	Tin-plated copper alloy
SCIP Number	c047c43c-2c53-458f-b7ce-4b4c19dee416

COLOURS



On request



POLES

01

NAME

MPT1612

3D FILE

File available