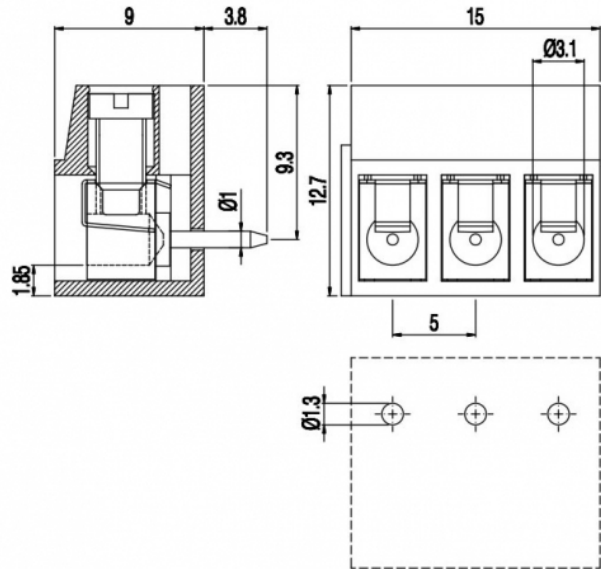


# MHE16\_-5-H



### GENERAL INFORMATION

pitch	5 mm
Height	12.7 mm
Depth	9 mm
Dimensional class	Media
Wire section	2.5 mm <sup>2</sup> / 14 AWG
Clamp opening size	3.1 x 3.1 mm
Wire stripping	max 6 mm
Operating temperature	-40 ÷ +130 °C

### ELECTRICAL CHARACTERISTICS

Current	16 A
Voltage	250 V
impulse voltage	2 kV

### MECHANICAL CHARACTERISTICS

Screw	M3
Recommended torque	0.5÷0.55 Nm / 4.5÷4.9 in.lbs

### APPROVALS DATA



Current	-	-	<b>UL 1059</b>
Voltage	-	-	20 A factory / 15 A field
Wire section	-	-	300 V
Torque	-	-	14 AWG
FILE	-	-	4.5 Lb-in
			E178356

### MATERIALS

Housing	PA - UL 94 V0
Screw	Galvanized steel
Clamp	Tin-plated copper alloy

Terminal

Copper alloy

**COLOURS**

Standard



On request



**POLES**

**NAME**

**3D FILE**

2	MHE162-5-H	File available
3	MHE163-5-H	File available