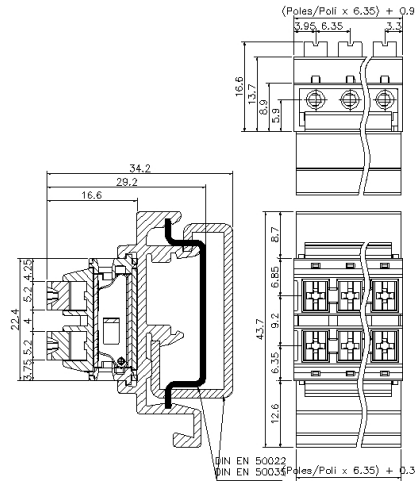
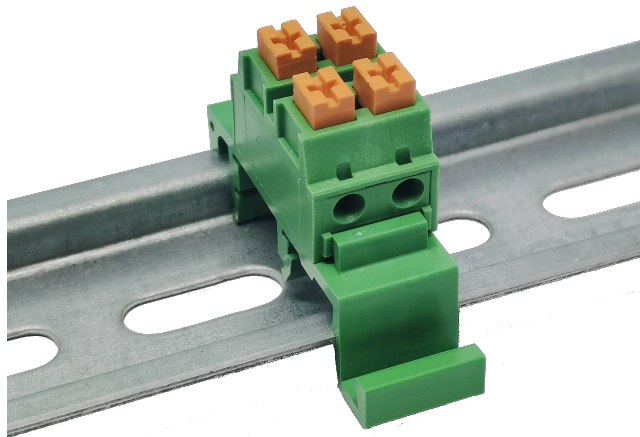


# LP2\_\_-6,35



## GENERAL INFORMATION

pitch	6,35 mm
Height	-
Depth	-
Dimensional class	Media
Wire section	2.5 mm <sup>2</sup> / 14 AWG
Clamp opening size	-
Wire stripping	max 13 mm
Operating temperature	-40 ÷ +100 °C

## ELECTRICAL CHARACTERISTICS

Current	24 A
Voltage	450 V
Test Voltage	2.5 kVrms/60s

## MECHANICAL CHARACTERISTICS

Screw	-
Recommended torque	-

## APPROVALS DATA



Current	-	-	-
Voltage	-	-	-
Wire section	-	-	-
Torque	-	-	-
FILE	-	-	-

**MATERIALS**

Housing	PA - UL 94 V0
Screw	-
Clamp	-
Terminal	Tin-plated copper alloy

**COLOURS**

Standard



On request



**POLES**

**NAME**

**3D FILE**

02	LP202-6,35	File not available for this product
03	LP203-6,35	File not available for this product