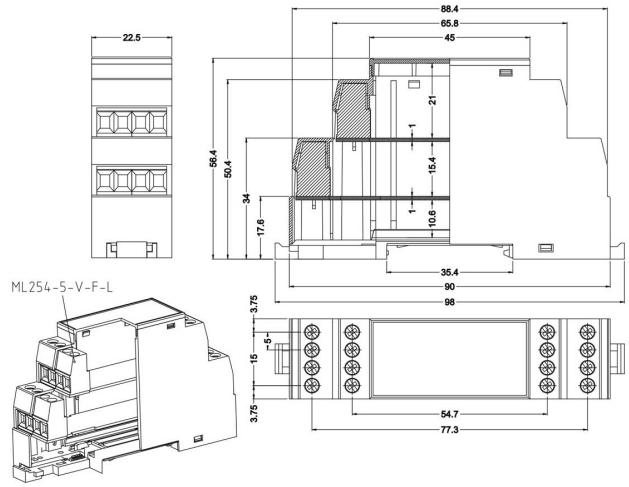
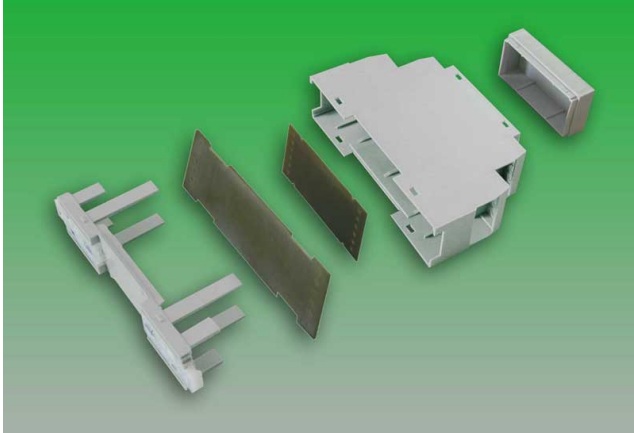


# CEM22-H



### GENERAL INFORMATION

pitch	-
Height	-
Depth	-
Dimensional class	Alta
Wire section	-
Clamp opening size	-
Wire stripping	-
Operating temperature	-

### ELECTRICAL CHARACTERISTICS

Current	-
Voltage	-
Test Voltage	-

### MECHANICAL CHARACTERISTICS

Screw	-
Recommended torque	-

### APPROVALS DATA



Current	-	-	-
Voltage	-	-	-
Wire section	-	-	-
Torque	-	-	-
FILE	-	-	-

### MATERIALS

Housing	PA - UL 94 V0
Screw	-
Clamp	-
Terminal	-

### COLOURS

Standard

On request



**POLES**  
01

**NAME**  
CEM22-H

**3D FILE**  
File available