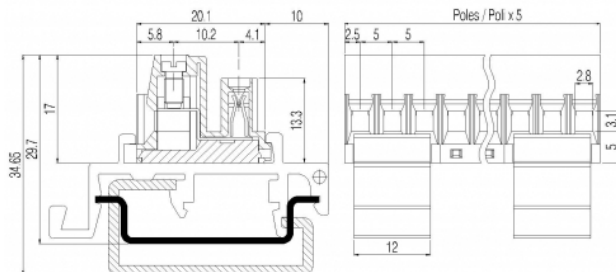
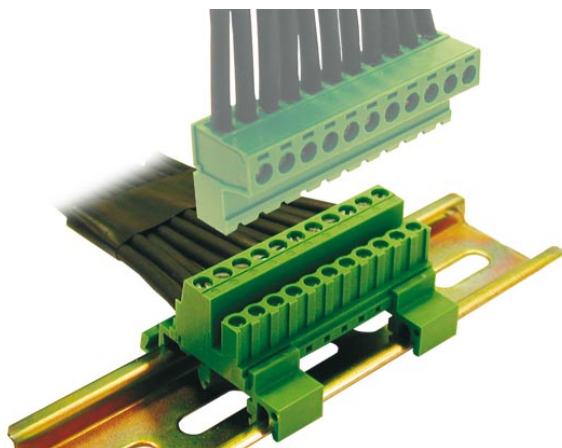


SVR__-5-DR



GENERAL INFORMATION

pitch	5 mm
Height	17 mm
Depth	20.1 mm
Dimensional class	Media
Wire section	2.5 mm ² / 14 AWG
Clamp opening size	2.8 x 3.1 mm
Wire stripping	max 9 mm
Operating temperature	-40 ÷ +130 °C

ELECTRICAL CHARACTERISTICS

Current	12 A
Voltage	250 V
impulse voltage	4 kV

MECHANICAL CHARACTERISTICS

Screw	M3
Recommended torque	0.5÷0.55 Nm / 4.5÷4.9 in.lbs

APPROVALS DATA



			UL 1059
Current	-	-	12 A factory / 12 A field
Voltage	-	-	300 V
Wire section	-	-	14 AWG
Torque	-	-	4,5 Lb-in
FILE	-	-	E178356

MATERIALS

Housing	PA - UL 94 V0
Screw	Galvanized steel
Clamp	Nickel-plated copper alloy
Terminal	Tin-plated copper alloy
SCIP Number	2b03b531-92df-4ed5-8cb8-d5dde059d488

COLOURS

Standard

On request

GN

GY

BK

BL

RD

YL

OG

POLES	NAME	3D FILE
03	SVR03-5-DR	File available
04	SVR04-5-DR	File available
05	SVR05-5-DR	File available
06	SVR06-5-DR	File available
07	SVR07-5-DR	File available
08	SVR08-5-DR	File available
09	SVR09-5-DR	File available
10	SVR10-5-DR	File available
11	SVR11-5-DR	File available
12	SVR12-5-DR	File available