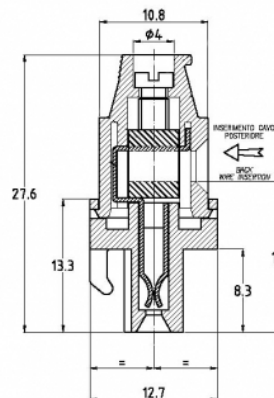
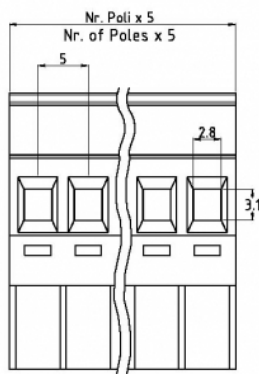


SV__-5-P



GENERAL INFORMATION

pitch	5 mm
Height	27.6 mm
Depth	12.7 mm
Dimensional class	Media
Wire section	2.5 mm ² / 14 AWG
Clamp opening size	2.8 x 3.1 mm
Wire stripping	max 9 mm
Operating temperature	-40 ÷ +130 °C

ELECTRICAL CHARACTERISTICS

Current	16 A
Voltage	250 V
impulse voltage	4 kV

MECHANICAL CHARACTERISTICS

Screw	M3
Recommended torque	0.5÷0.55 Nm / 4.5÷4.9 in.lbs

APPROVALS DATA



	EN 61984	EN 61984	UL 1059
Current	16 A	12 A	12 A factory / 12 A field
Voltage	250 V	250 V	300 V
Wire section	2,5 mm ²	2,5 mm ²	14 AWG
Torque	0,5 Nm	0,5 Nm	4,5 Lb-in
FILE	CA02.04178	40005779	E178356

MATERIALS

Housing	PA - UL 94 V0
Screw	Galvanized steel

Clamp
Terminal
SCIP Number

Nickel-plated copper alloy
Nickel-plated copper alloy
269cc4c7-8d06-4994-abfa-5163d2b356bd

COLOURS

Standard



On request



POLES	NAME	3D FILE
02	SV02-5-P	File available
03	SV03-5-P	File available
04	SV04-5-P	File available
05	SV05-5-P	File available
06	SV06-5-P	File available
07	SV07-5-P	File available
08	SV08-5-P	File available
09	SV09-5-P	File available
10	SV10-5-P	File available
11	SV11-5-P	File available
12	SV12-5-P	File available
13	SV13-5-P	File available
14	SV14-5-P	File available
15	SV15-5-P	File available
16	SV16-5-P	File available
17	SV17-5-P	File available
18	SV18-5-P	File available
19	SV19-5-P	File available
20	SV20-5-P	File available
21	SV21-5-P	File available
22	SV22-5-P	File available
23	SV23-5-P	File available
24	SV24-5-P	File available