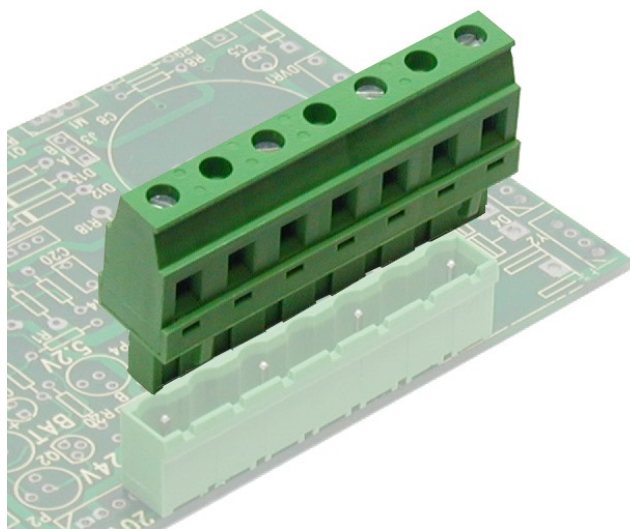


# SV\_\_-15,24-F



## GENERAL INFORMATION

pitch	15,24 mm
Height	27.6 mm
Depth	12.7 mm
Dimensional class	Media
Wire section	2.5 mm <sup>2</sup> / 14 AWG
Clamp opening size	2.8 x 3.1 mm
Wire stripping	max 9 mm
Operating temperature	-40 ÷ +130 °C

## ELECTRICAL CHARACTERISTICS

Current	16 A
Voltage	1000 V
impulse voltage	6 kV

## MECHANICAL CHARACTERISTICS

Screw	M3
Recommended torque	0.5÷0.55 Nm / 4.5÷4.9 in.lbs

## APPROVALS DATA



	EN 61984	EN 61984	UL 1059
Current	16 A	15 A	12 A factory / 12 A field
Voltage	500 V	400 V	600 V
Wire section	2,5 mm <sup>2</sup>	2,5 mm <sup>2</sup>	14 AWG
Torque	0,5 Nm	0,5 Nm	4,5 Lb-in
FILE	CA02.04178	40005779	E178356

## MATERIALS

Housing	PA - UL 94 V0
Screw	Galvanized steel
Clamp	-
Terminal	Nickel-plated copper alloy
SCIP Number	269cc4c7-8d06-4994-abfa-5163d2b356bd

## COLOURS

Standard



On request



<b>POLES</b>	<b>NAME</b>	<b>3D FILE</b>
02	SV02-15,24-F	File not available for this product
03	SV03-15,24-F	File not available for this product
04	SV04-15,24-F	File not available for this product
05	SV05-15,24-F	File not available for this product
06	SV06-15,24-F	File not available for this product
07	SV07-15,24-F	File not available for this product
08	SV08-15,24-F	File not available for this product