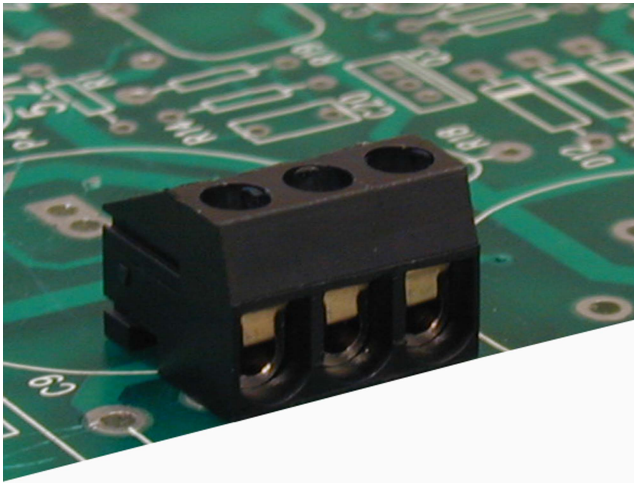
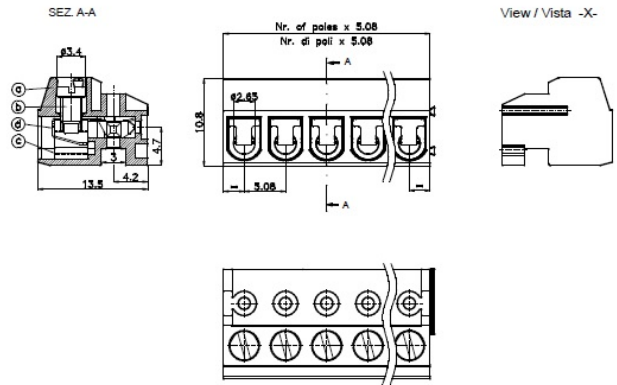


# SHS\_\_-5,08



SHSxx-5,08



## GENERAL INFORMATION

pitch	5,08 mm
Height	10.8 mm
Depth	13.5 mm
Dimensional class	Media
Wire section	1.5 mm <sup>2</sup> / 16 AWG
Clamp opening size	-
Wire stripping	max 6 mm
Operating temperature	-40 ÷ +130 °C

## ELECTRICAL CHARACTERISTICS

Current	10 A
Voltage	250 V
impulse voltage	4 kV

## MECHANICAL CHARACTERISTICS

Screw	M2.5
Recommended torque	0.4÷0.44 Nm / 3.6÷3.9 in.lbs

## APPROVALS DATA



		EN 61984	UL 1059
Current	-	12 A	10 A factory / 10 A field
Voltage	-	200 V	300 V
Wire section	-	0.2÷2.5 mm <sup>2</sup>	16 AWG
Torque	-	0.4 Nm	3.5 Lb-in
FILE	-	40053107	E178356

## MATERIALS

Housing	PA - UL 94 V0
Screw	Galvanized steel
Clamp	Nickel-plated copper alloy
Terminal	Copper alloy
SCIP Number	f59fce50-2030-4a8c-a1d5-32dbe6d47a1f

## COLOURS

Standard



On request



POLES	NAME	3D FILE
02	SHS02-5,08	File not available for this product
03	SHS03-5,08	File not available for this product
06	SHS06-5,08	File not available for this product
07	SHS07-5,08	File not available for this product
08	SHS08-5,08	File not available for this product
09	SHS09-5,08	File not available for this product
10	SHS10-5,08	File not available for this product
11	SHS11-5,08	File not available for this product
12	SHS12-5,08	File not available for this product