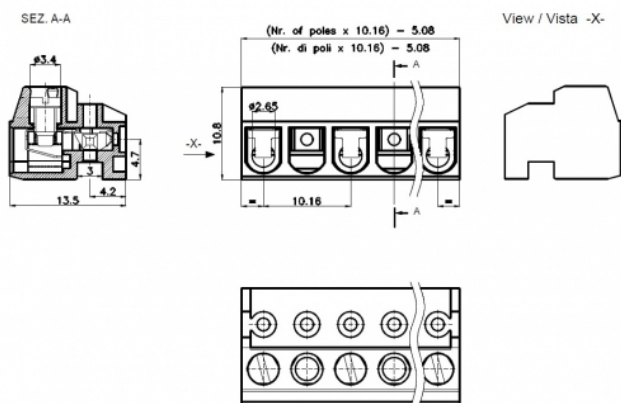


SHS__-10,16-L



SHSxx-10,16-L



GENERAL INFORMATION

pitch	10 mm
Height	10.8 mm
Depth	13.5 mm
Dimensional class	Media
Wire section	1.5 mm ² / 16 AWG
Clamp opening size	-
Wire stripping	max 6 mm
Operating temperature	-40 ÷ +130 °C

ELECTRICAL CHARACTERISTICS

Current	10 A
Voltage	630 V
impulse voltage	6 kV

MECHANICAL CHARACTERISTICS

Screw	M2.5
Recommended torque	0.4÷0.44 Nm / 3.6÷3.9 in.lbs

APPROVALS DATA



		EN 61984	UL 1059
Current	-	12 A	10 A factory / 10 A field
Voltage	-	500 V	300 V
Wire section	-	-	16 AWG
Torque	-	-	3.5 Lb-in
FILE	-	40005779	E178356

MATERIALS

Housing	PA - UL 94 V0
Screw	Galvanized steel
Clamp	Nickel-plated copper alloy
Terminal	Copper alloy
SCIP Number	f59fce50-2030-4a8c-a1d5-32dbe6d47a1f

COLOURS

Standard

BK

On request

GN **GY** **BL** **RD** **YL** **OG**

POLES	NAME	3D FILE
01	SHS01-10,16-L	File not available for this product
02	SHS02-10,16-L	File not available for this product
03	SHS03-10,16-L	File not available for this product
04	SHS04-10,16-L	File not available for this product
05	SHS05-10,16-L	File not available for this product
06	SHS06-10,16-L	File not available for this product