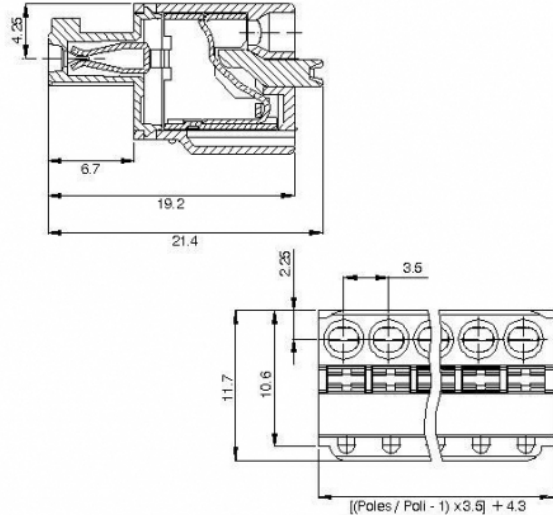
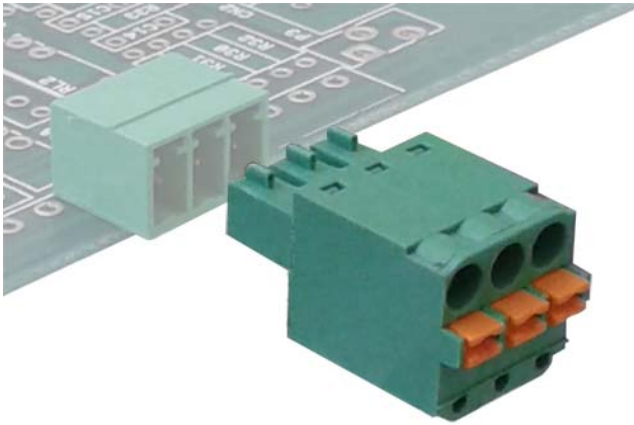


# SHM\_\_-3,5-F



## GENERAL INFORMATION

pitch	3,5 mm
Height	11.7 mm
Depth	21.4 mm
Dimensional class	Bassa
Wire section	1,5 mm <sup>2</sup> / 16 AWG
Clamp opening size	-
Wire stripping	max 10 mm
Operating temperature	-40 ÷ +130 °C

## ELECTRICAL CHARACTERISTICS

Current	8 A
Voltage	160 V
impulse voltage	2,5 kV

## MECHANICAL CHARACTERISTICS

Screw	-
Recommended torque	-

## APPROVALS DATA



Current	-	-	<b>UL 1059</b>
Voltage	-	-	11 A factory / 11 A field
Wire section	-	-	300 V
Torque	-	-	14 AWG
FILE	-	-	-
			E178356

## MATERIALS

Housing	PA - UL 94 V0
Screw	-
Clamp	-

Tin-plated copper alloy

**Terminal**

---

**COLOURS**

Standard



On request



POLES	NAME	3D FILE
02	SHM02-3,5-F	File not available for this product
03	SHM03-3,5-F	File available
04	SHM04-3,5-F	File available
05	SHM05-3,5-F	File not available for this product
06	SHM06-3,5-F	File available
07	SHM07-3,5-F	File available
08	SHM08-3,5-F	File not available for this product
09	SHM09-3,5-F	File not available for this product
10	SHM10-3,5-F	File not available for this product
11	SHM11-3,5-F	File not available for this product
12	SHM12-3,5-F	File not available for this product
13	SHM13-3,5-F	File not available for this product
14	SHM14-3,5-F	File not available for this product
15	SHM15-3,5-F	File not available for this product
16	SHM16-3,5-F	File not available for this product
17	SHM17-3,5-F	File not available for this product
18	SHM18-3,5-F	File not available for this product
19	SHM19-3,5-F	File not available for this product
20	SHM20-3,5-F	File not available for this product
21	SHM21-3,5-F	File not available for this product
22	SHM22-3,5-F	File not available for this product
23	SHM23-3,5-F	File not available for this product
24	SHM24-3,5-F	File not available for this product