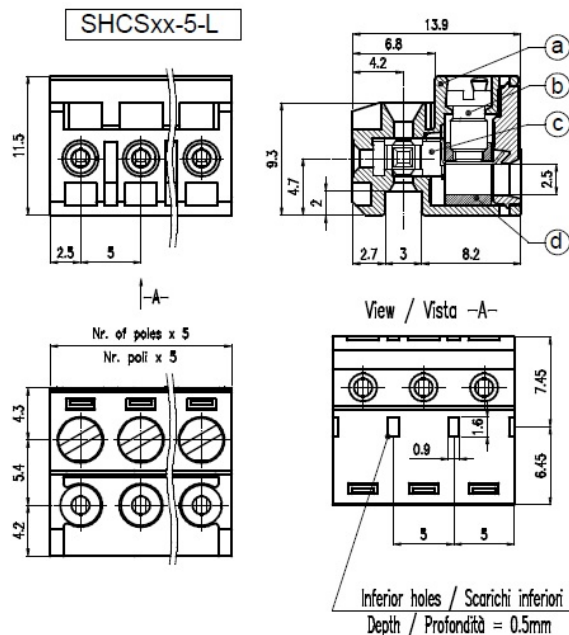
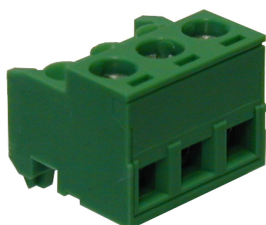


SHCS__-5-L



GENERAL INFORMATION

pitch	5 mm
Height	11.5 mm
Depth	13.9 mm
Dimensional class	Media
Wire section	2,5 mm ² / 14 AWG
Clamp opening size	2,5 x 2,5 mm
Wire stripping	max 7 mm
Operating temperature	-40 ÷ +130 °C

ELECTRICAL CHARACTERISTICS

Current	15 A
Voltage	250 V
Test Voltage	4 kVrms/60s

MECHANICAL CHARACTERISTICS

Screw	M3
Recommended torque	0,5÷0,55 Nm / 4,5÷4,9 in.lbs

APPROVALS DATA



		EN 61984	UL 1059
Current	-	20 A	18 A factory / 15 A field
Voltage	-	200 V	300 V
Wire section	-	0.2÷2.5 mm ²	14 ÷ 30 AWG
Torque	-	0.5 Nm	4,5 Lb-in
FILE	-	40053107	E178356

MATERIALS

Housing	PA - UL 94 V0
---------	---------------

Screw	Galvanized steel
Clamp	Nickel-plated copper alloy
Terminal	Tin-plated copper alloy
SCIP Number	8f3ed649-5dcd-4973-a9c9-d71b7f8f530d

COLOURS

Standard



On request



POLES	NAME	3D FILE
2	SHCS2-5-L	File not available for this product
3	SHCS3-5-L	File not available for this product
4	SHCS4-5-L	File not available for this product
5	SHCS5-5-L	File not available for this product
6	SHCS6-5-L	File not available for this product
7	SHCS7-5-L	File not available for this product
8	SHCS8-5-L	File not available for this product
9	SHCS9-5-L	File not available for this product
10	SHCS10-5-L	File available
11	SHCS11-5-L	File available
12	SHCS12-5-L	File available