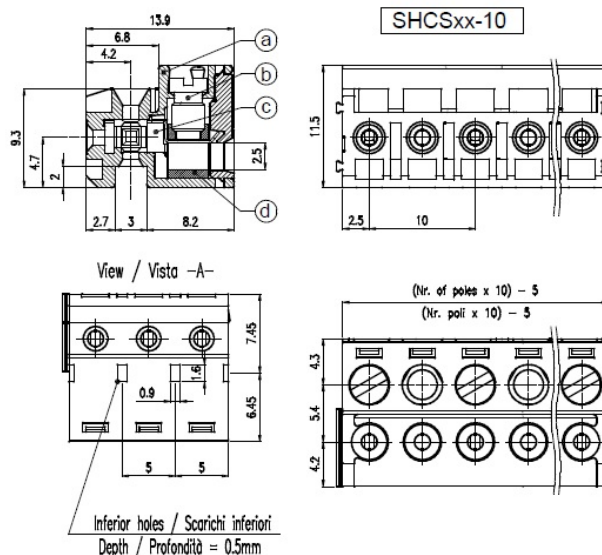


# SHCS\_\_-10



## GENERAL INFORMATION

pitch	10 mm
Height	11,5 mm
Depth	13,9 mm
Dimensional class	Media
Wire section	2,5 mm <sup>2</sup> / 14 AWG
Clamp opening size	2,5 x 2,5 mm
Wire stripping	max 7 mm
Operating temperature	-40 ÷ +130 °C

## ELECTRICAL CHARACTERISTICS

Current	15 A
Voltage	630 V
impulse voltage	6 kV

## MECHANICAL CHARACTERISTICS

Screw	M3
Recommended torque	0,5÷0,55 Nm / 4,5÷4,9 in.lbs

## APPROVALS DATA



		EN 61984	UL 1059
Current	-	20 A	18 A factory / 15 A field
Voltage	-	500 V	600 V
Wire section	-	0.2÷2.5 mm <sup>2</sup>	14 AWG
Torque	-	0.5 Nm	4,5 Lb-in
FILE	-	40053107	E178356

## MATERIALS

Housing	PA - UL 94 V0
Screw	Galvanized steel
Clamp	Nickel-plated copper alloy
Terminal	Tin-plated copper alloy

SCIP Number

8f3ed649-5dcd-4973-a9c9-d71b7f8f530d

**COLOURS**

Standard



On request



**POLES**

**NAME**

**3D FILE**

02	SHCS02-10	File available
03	SHCS03-10	File available
04	SHCS04-10	File available
05	SHCS05-10	File available
06	SHCS06-10	File available