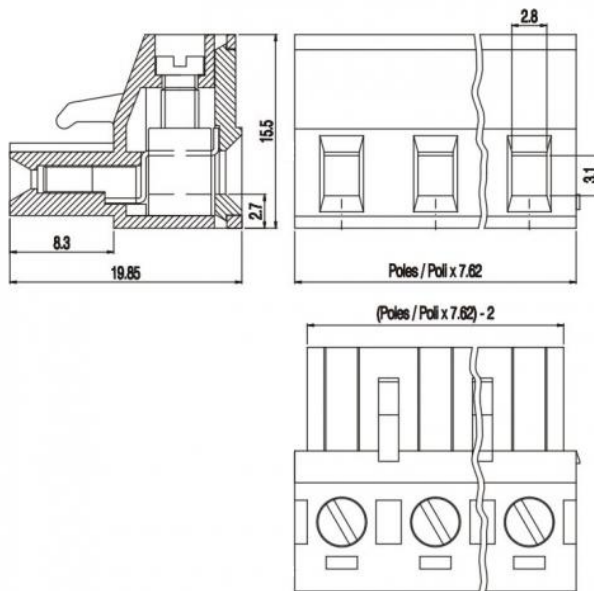
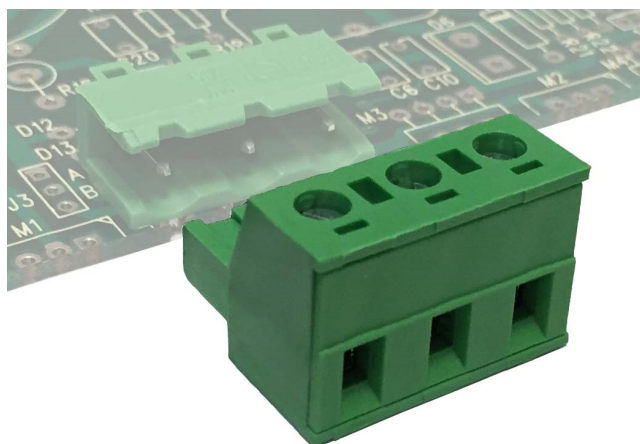


SH__-7,62



GENERAL INFORMATION

pitch	7,62 mm
Height	15.50 mm
Depth	19.85 mm
Dimensional class	Media
Wire section	2.5 mm ² / 14 AWG
Clamp opening size	2.8 x 3.1 mm
Wire stripping	max 8 mm
Operating temperature	-40 ÷ +130 °C

ELECTRICAL CHARACTERISTICS

Current	16 A
Voltage	500 V
impulse voltage	6 kV

MECHANICAL CHARACTERISTICS

Screw	M3
Recommended torque	0.5÷0.55 Nm / 4.5÷4.9 in.lbs

APPROVALS DATA



	EN 60998-1	EN 60998-1	UL 1059
Current	16 A	15 A	12 A factory / 12 A field
Voltage	500 V	500 V	300 V
Wire section	2.5 mm ²	2.5 mm ²	14 AWG
Torque	0.5 Nm	0.5 Nm	4.5 Lb-in
FILE	CA02.04178	40005779	E178356

MATERIALS

Housing	PA - UL 94 V0
Screw	Galvanized steel
Clamp	Nickel-plated copper alloy

Terminal
SCIP Number

Nickel-plated copper alloy
2b16c5e0-b81c-4d1f-839d-5472703af01d

COLOURS

Standard



On request



POLES

NAME

3D FILE

02	SH02-7,62	File available
03	SH03-7,62	File available
04	SH04-7,62	File available
05	SH05-7,62	File available
06	SH06-7,62	File available
07	SH07-7,62	File available
08	SH08-7,62	File available
09	SH09-7,62	File available
10	SH10-7,62	File available