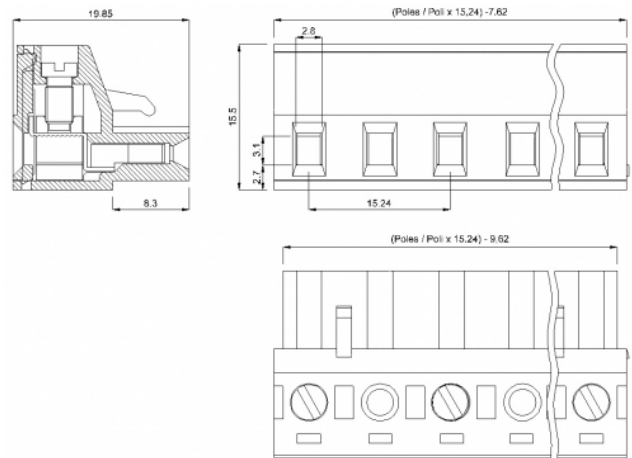
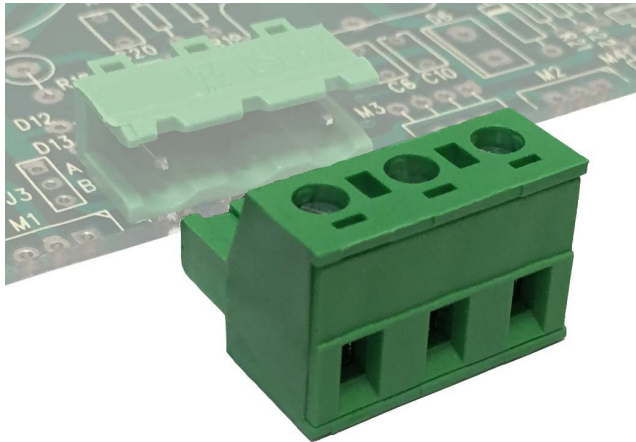


SH__-15,24



GENERAL INFORMATION

pitch	15,24 mm
Height	15.50 mm
Depth	19.85 mm
Dimensional class	Media
Wire section	2.5 mm ² / 14 AWG
Clamp opening size	2.8 x 3.1 mm
Wire stripping	max 8 mm
Operating temperature	-40 ÷ +130 °C

ELECTRICAL CHARACTERISTICS

Current	16 A
Voltage	1000 V
impulse voltage	8 kV

MECHANICAL CHARACTERISTICS

Screw	M3
Recommended torque	0.5÷0.55 Nm / 4.5÷4.9 in.lbs

APPROVALS DATA



	EN 60998-1	EN 60998-1	UL 1059
Current	16 A	15 A	12 A factory / 12 A field
Voltage	500 V	500 V	600 V
Wire section	2.5 mm ²	2.5 mm ²	14 AWG
Torque	0.5 Nm	0.5 Nm	4.5 Lb-in
FILE	CA02.04178	40005779	E178356

MATERIALS

Housing	PA - UL 94 V0
Screw	Galvanized steel
Clamp	Nickel-plated copper alloy
Terminal	Nickel-plated copper alloy
SCIP Number	2b16c5e0-b81c-4d1f-839d-5472703af01d

COLOURS

Standard

On request

GN

GY

BK

BL

RD

YL

OG

POLES	NAME	3D FILE
02	SH02-15,24	File not available for this product
03	SH03-15,24	File not available for this product
04	SH04-15,24	File not available for this product
05	SH05-15,24	File not available for this product