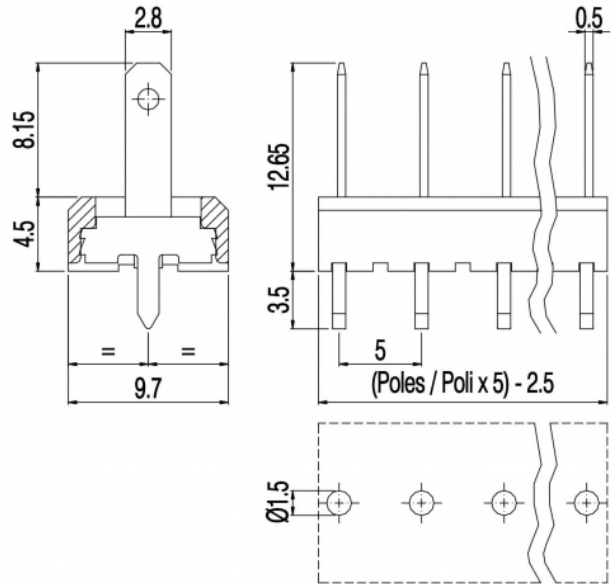
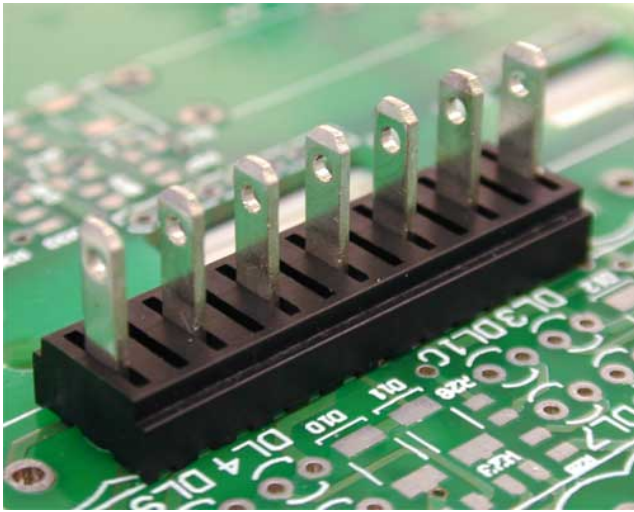


# PVSF\_\_-5-V-S25



## GENERAL INFORMATION

pitch	5 mm
Height	12.65 mm
Depth	9.7 mm
Dimensional class	n/a
Wire section	-
Clamp opening size	-
Wire stripping	-
Operating temperature	-40 ÷ +130 °C

## ELECTRICAL CHARACTERISTICS

Current	17,5 A
Voltage	250 V
impulse voltage	4 kV

## MECHANICAL CHARACTERISTICS

Screw	-
Recommended torque	-

## APPROVALS DATA



Current	-	-	<b>UL 1059</b>
Voltage	-	-	10 A factory / 5 A field
Wire section	-	-	300 V
Torque	-	-	-
FILE	-	-	E178356

## MATERIALS

Housing	PA - UL 94 V0
Screw	-
Clamp	-
Terminal	Tin-plated copper alloy

SCIP Number

e7871ea5-2cf8-4f17-b626-38a85b04faba

**COLOURS**

Standard



On request



POLES	NAME	3D FILE
02	PVSF02-5-V-S25	File not available for this product
03	PVSF03-5-V-S25	File not available for this product
04	PVSF04-5-V-S25	File not available for this product
05	PVSF05-5-V-S25	File not available for this product
06	PVSF06-5-V-S25	File not available for this product
07	PVSF07-5-V-S25	File not available for this product
08	PVSF08-5-V-S25	File not available for this product
09	PVSF09-5-V-S25	File not available for this product
10	PVSF10-5-V-S25	File not available for this product
11	PVSF11-5-V-S25	File not available for this product
12	PVSF12-5-V-S25	File not available for this product
13	PVSF13-5-V-S25	File not available for this product
14	PVSF14-5-V-S25	File not available for this product
15	PVSF15-5-V-S25	File not available for this product
16	PVSF16-5-V-S25	File not available for this product
17	PVSF17-5-V-S25	File not available for this product
18	PVSF18-5-V-S25	File not available for this product
19	PVSF19-5-V-S25	File not available for this product
20	PVSF20-5-V-S25	File not available for this product
21	PVSF21-5-V-S25	File not available for this product
22	PVSF22-5-V-S25	File not available for this product
23	PVSF23-5-V-S25	File not available for this product
24	PVSF24-5-V-S25	File not available for this product