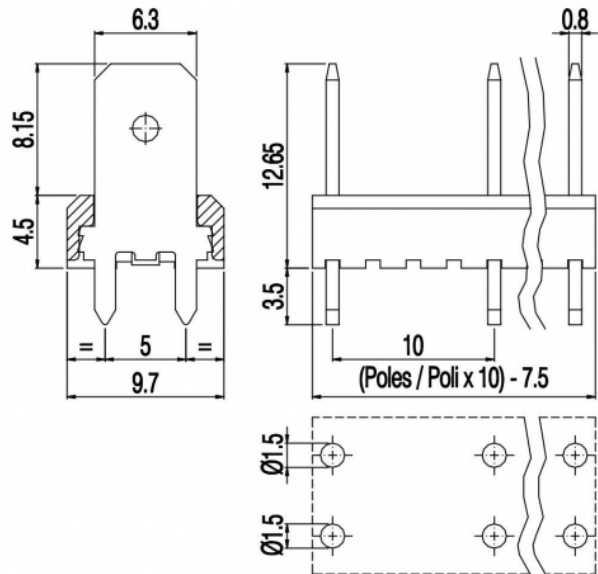
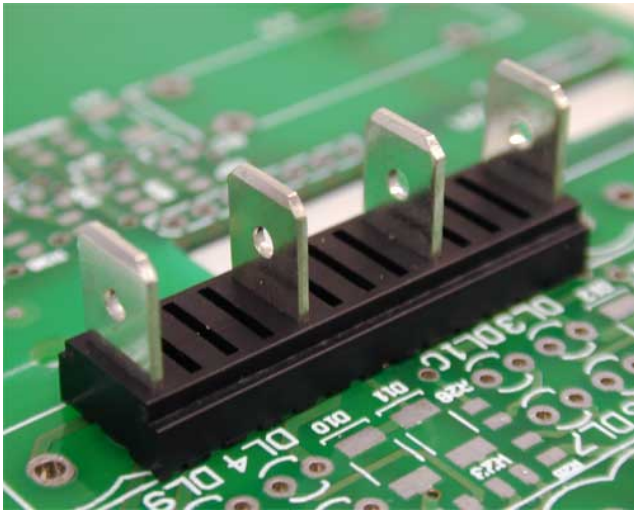


# PVSF\_\_-10-V-D68



## GENERAL INFORMATION

pitch	10 mm
Height	12.65 mm
Depth	9.7 mm
Dimensional class	n/a
Wire section	-
Clamp opening size	-
Wire stripping	-
Operating temperature	-40 ÷ +130 °C

## ELECTRICAL CHARACTERISTICS

Current	24 A
Voltage	630 V
impulse voltage	6 kV

## MECHANICAL CHARACTERISTICS

Screw	-
Recommended torque	-

## APPROVALS DATA



Current	-	-	UL 1059
Voltage	-	-	18 A factory / 15 A field
Wire section	-	-	300 V
Torque	-	-	-
FILE	-	-	E178356

## MATERIALS

Housing	PA - UL 94 V0
Screw	-
Clamp	-
Terminal	Tin-plated copper alloy

SCIP Number

e7871ea5-2cf8-4f17-b626-38a85b04faba

**COLOURS**

Standard



On request



**POLES**

**NAME**

**3D FILE**

02	PVSF02-10-V-D68	File not available for this product
03	PVSF03-10-V-D68	File not available for this product
04	PVSF04-10-V-D68	File not available for this product
05	PVSF05-10-V-D68	File not available for this product
06	PVSF06-10-V-D68	File not available for this product
07	PVSF07-10-V-D68	File not available for this product
08	PVSF08-10-V-D68	File not available for this product
09	PVSF09-10-V-D68	File not available for this product