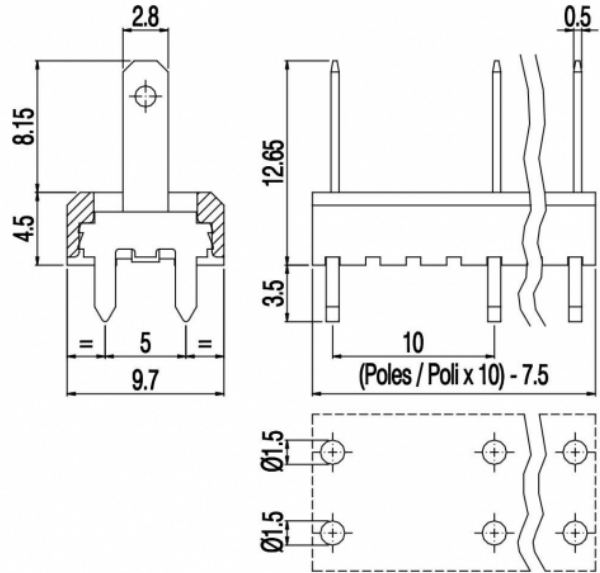
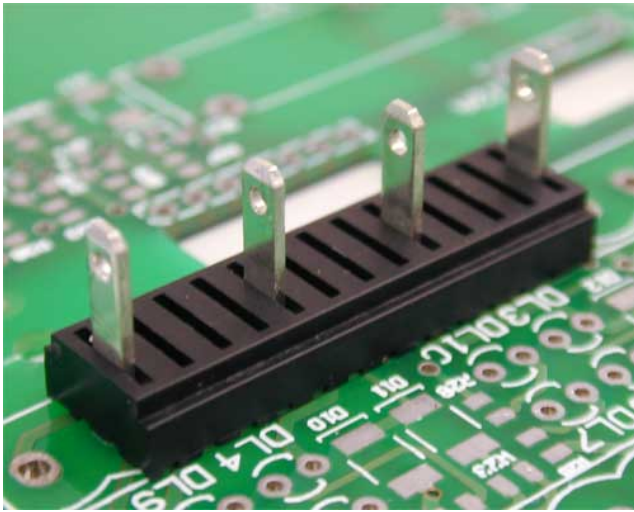


PVSF__-10-V-D25



GENERAL INFORMATION

pitch	10 mm
Height	12.65 mm
Depth	9.7 mm
Dimensional class	n/a
Wire section	-
Clamp opening size	-
Wire stripping	-
Operating temperature	-40 ÷ +130 °C

ELECTRICAL CHARACTERISTICS

Current	17.5 A
Voltage	630 V
impulse voltage	6 kV

MECHANICAL CHARACTERISTICS

Screw	-
Recommended torque	-

APPROVALS DATA



Current	-	-	UL 1059
Voltage	-	-	10 A factory / 5 A field
Wire section	-	-	300 V
Torque	-	-	-
FILE	-	-	E178356

MATERIALS

Housing	PA - UL 94 V0
Screw	-
Clamp	-
Terminal	Tin-plated copper alloy

SCIP Number

e7871ea5-2cf8-4f17-b626-38a85b04faba

COLOURS

Standard



On request



POLES	NAME	3D FILE
02	PVSF02-10-V-D25	File not available for this product
03	PVSF03-10-V-D25	File not available for this product
04	PVSF04-10-V-D25	File not available for this product
05	PVSF05-10-V-D25	File not available for this product
06	PVSF06-10-V-D25	File not available for this product
07	PVSF07-10-V-D25	File not available for this product
08	PVSF08-10-V-D25	File not available for this product
09	PVSF09-10-V-D25	File not available for this product
10	PVSF10-10-V-D25	File not available for this product
11	PVSF11-10-V-D25	File not available for this product
12	PVSF12-10-V-D25	File not available for this product
13	PVSF13-10-V-D25	File not available for this product
14	PVSF14-10-V-D25	File not available for this product
15	PVSF15-10-V-D25	File not available for this product