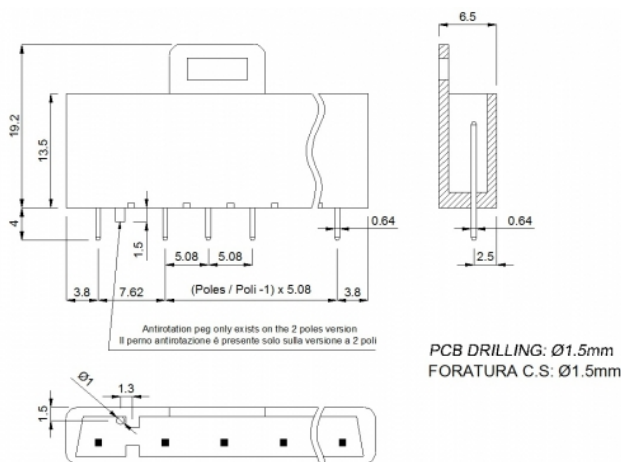
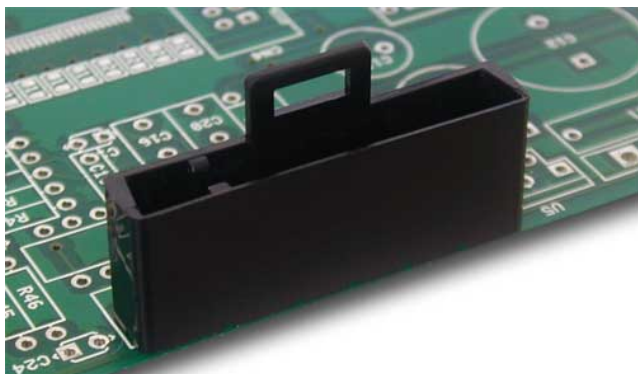


PCR__-5,08-V



GENERAL INFORMATION

pitch	5,08 mm
Height	19.2 mm
Depth	6.5 mm
Dimensional class	n/a
Wire section	-
Clamp opening size	-
Wire stripping	-
Operating temperature	-40 ÷ +130 °C

ELECTRICAL CHARACTERISTICS

Current	4 A
Voltage	250 V
impulse voltage	2 kV

MECHANICAL CHARACTERISTICS

Screw	-
Recommended torque	-

APPROVALS DATA



Current	-	-	-
Voltage	-	-	-
Wire section	-	-	-
Torque	-	-	-
FILE	-	-	-

MATERIALS

Housing	-
Screw	-
Clamp	-
Terminal	-

COLOURS

Standard

On request



POLES	NAME	3D FILE
02	PCR02-5,08-V	File not available for this product
03	PCR03-5,08-V	File not available for this product
04	PCR04-5,08-V	File not available for this product
05	PCR05-5,08-V	File not available for this product
06	PCR06-5,08-V	File not available for this product
07	PCR07-5,08-V	File not available for this product
08	PCR08-5,08-V	File not available for this product
11	PCR11-5,08-V	File not available for this product