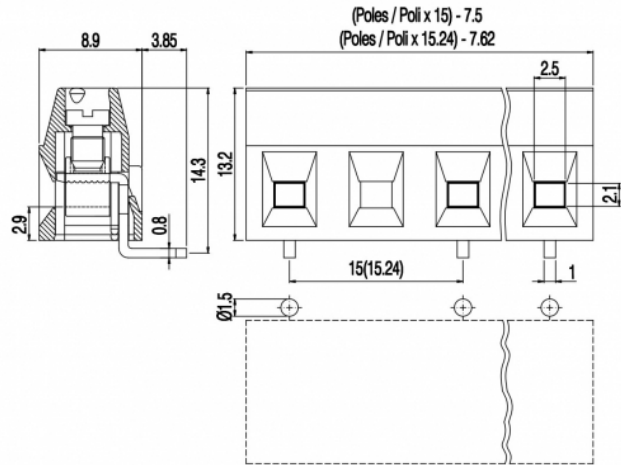
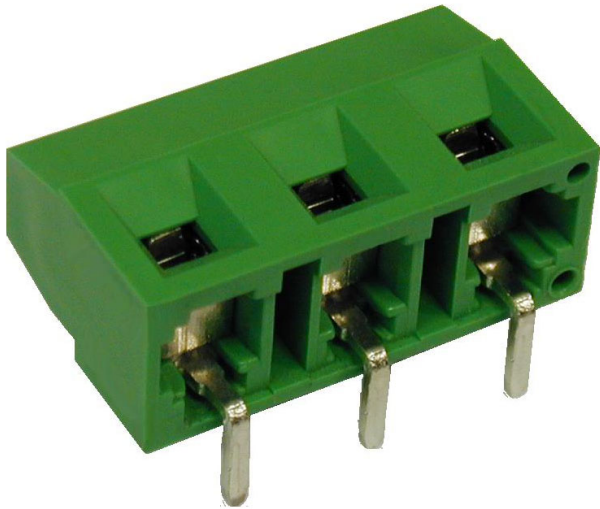


MVS17_-15-H-L



GENERAL INFORMATION

| | |
|-----------------------|------------------------------|
| pitch | 15 mm |
| Height | 13.2 mm |
| Depth | 8.9 mm |
| Dimensional class | Bassa |
| Wire section | 1.5 mm ² / 16 AWG |
| Clamp opening size | 2.5 x 2.1 mm |
| Wire stripping | max 7 mm |
| Operating temperature | -40 ÷ +130 °C |

ELECTRICAL CHARACTERISTICS

| | |
|-----------------|--------|
| Current | 17.5 A |
| Voltage | 750 V |
| impulse voltage | 3 kV |

MECHANICAL CHARACTERISTICS

| | |
|--------------------|------------------------------|
| Screw | M3 |
| Recommended torque | 0.5÷0.55 Nm / 4.5÷4.9 in.lbs |

APPROVALS DATA



| | EN 60998-1 | | UL 1059 |
|--------------|---------------------|---|-----------------------------|
| Current | 17.5 A | - | 17.5 A factory / 10 A field |
| Voltage | 750 V | - | 600 V |
| Wire section | 1.5 mm ² | - | 16 AWG |
| Torque | 0.5 Nm | - | 4.5 Lb-in |
| FILE | CA02.00598 | - | E178356 |

MATERIALS

| | |
|-------------|--------------------------------------|
| Housing | PA - UL 94 V0 |
| Screw | Galvanized steel |
| Clamp | Nickel-plated copper alloy |
| Terminal | Tin-plated copper alloy |
| SCIP Number | 2e7d6973-4e16-4203-958f-24d6cd681252 |

COLOURS

Standard

On request



| POLES | NAME | 3D FILE |
|--------------|---------------|-------------------------------------|
| 1 | MVS171-15-H-L | File not available for this product |
| 2 | MVS172-15-H-L | File not available for this product |
| 3 | MVS173-15-H-L | File not available for this product |
| 4 | MVS174-15-H-L | File not available for this product |
| 5 | MVS175-15-H-L | File not available for this product |
| 6 | MVS176-15-H-L | File not available for this product |