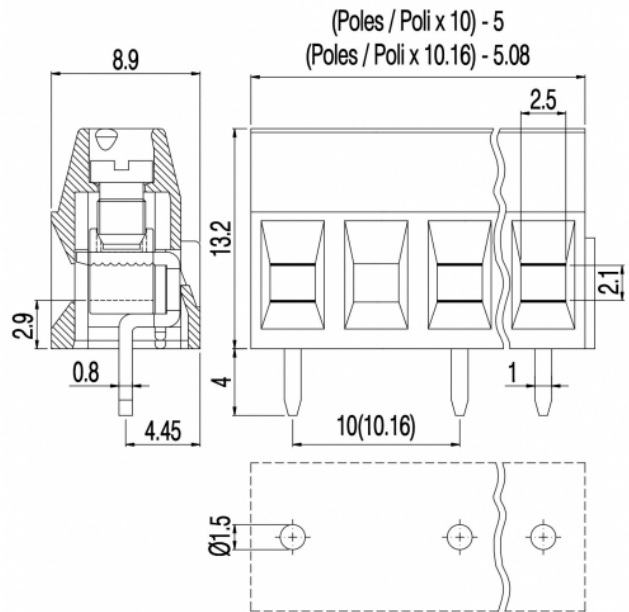
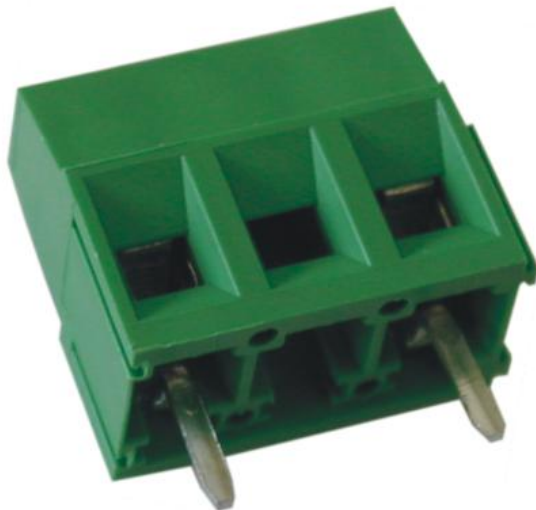


# MVS15\_-10-V



## GENERAL INFORMATION

pitch	10 mm
Height	13.2 mm
Depth	8.9 mm
Dimensional class	Bassa
Wire section	1.5 mm <sup>2</sup> / 16 AWG
Clamp opening size	2.5 x 2.1 mm
Wire stripping	max 7 mm
Operating temperature	-40 ÷ +130 °C

## ELECTRICAL CHARACTERISTICS

Current	17.5 A
Voltage	750 V
impulse voltage	3 kV

## MECHANICAL CHARACTERISTICS

Screw	M3
Recommended torque	0.5 ÷ 0.55 Nm / 4.5 ÷ 4.9 in.lbs

## APPROVALS DATA



	<b>EN 60998-1</b>		<b>UL 1059</b>
Current	17.5 A	-	17.5 A factory / 10 A field
Voltage	750 V	-	600 V
Wire section	1.5 mm <sup>2</sup>	-	16 AWG
Torque	0.5 Nm	-	4.5 Lb-in
FILE	CA02.00598	-	E178356

## MATERIALS

Housing	PA - UL 94 V0
Screw	Galvanized steel
Clamp	Nickel-plated copper alloy

Terminal  
SCIP Number

Tin-plated copper alloy  
713ad43e-8dff-4607-9cfa-843d4a730153

**COLOURS**

Standard

On request



**POLES**

**NAME**

**3D FILE**

1	MVS151-10-V	File not available for this product
2	MVS152-10-V	File not available for this product
3	MVS153-10-V	File not available for this product
4	MVS154-10-V	File not available for this product
5	MVS155-10-V	File not available for this product
6	MVS156-10-V	File not available for this product