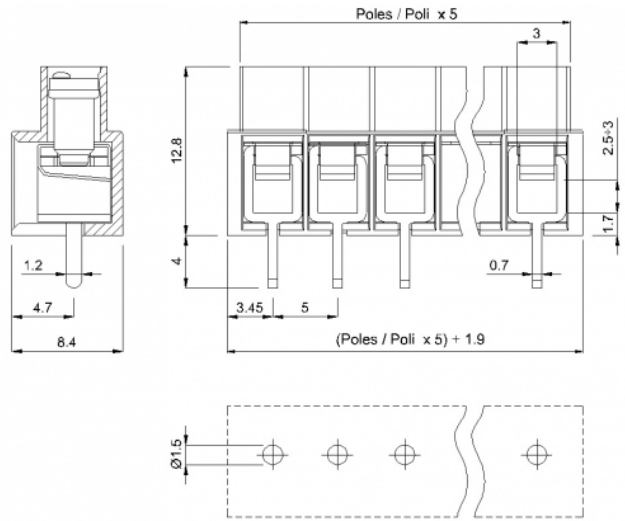
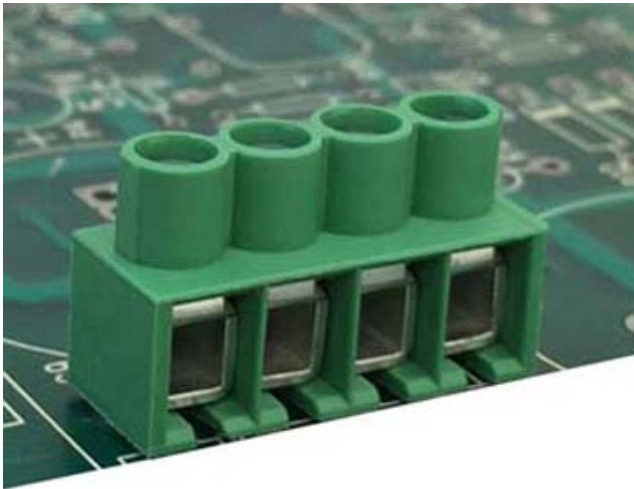


# MVE26\_-5-V



## GENERAL INFORMATION

pitch	5 mm
Height	12.8 mm
Depth	8.4 mm
Dimensional class	Bassa
Wire section	2.5 mm <sup>2</sup> / 14 AWG
Clamp opening size	2.6 x 3 mm
Wire stripping	max 7,5 mm
Operating temperature	-40 ÷ +130 °C

## ELECTRICAL CHARACTERISTICS

Current	24 A
Voltage	450 V
impulse voltage	2,5 kV

## MECHANICAL CHARACTERISTICS

Screw	M3
Recommended torque	0,5±0 Nm / 4,5±4.4 in.lbs

## APPROVALS DATA



		EN 60998-1	UL 1059
Current	-	24 A	26 A factory / 20 A field
Voltage	-	450 V	300 V
Wire section	-	2,5 mm <sup>2</sup>	12 AWG
Torque	-	0,5 Nm	4,5 Lb-in
FILE	-	40019705	E178356

## MATERIALS

Housing	PA - UL 94 V0
Screw	Galvanized steel
Clamp	Tin-plated copper alloy
Terminal	Tin-plated copper alloy

## COLOURS

Standard

On request



<b>POLES</b>	<b>NAME</b>	<b>3D FILE</b>
2	MVE262-5-V	File not available for this product
3	MVE263-5-V	File not available for this product
4	MVE264-5-V	File not available for this product
5	MVE265-5-V	File not available for this product
6	MVE266-5-V	File not available for this product
7	MVE267-5-V	File not available for this product
8	MVE268-5-V	File not available for this product
9	MVE269-5-V	File not available for this product
10	MVE2610-5-V	File not available for this product
11	MVE2611-5-V	File not available for this product
12	MVE2612-5-V	File not available for this product
13	MVE2613-5-V	File not available for this product
14	MVE2614-5-V	File not available for this product
15	MVE2615-5-V	File not available for this product
16	MVE2616-5-V	File not available for this product
17	MVE2617-5-V	File not available for this product
18	MVE2618-5-V	File not available for this product
19	MVE2619-5-V	File not available for this product
20	MVE2620-5-V	File not available for this product
21	MVE2621-5-V	File not available for this product
22	MVE2622-5-V	File not available for this product
23	MVE2623-5-V	File not available for this product
24	MVE2624-5-V	File not available for this product