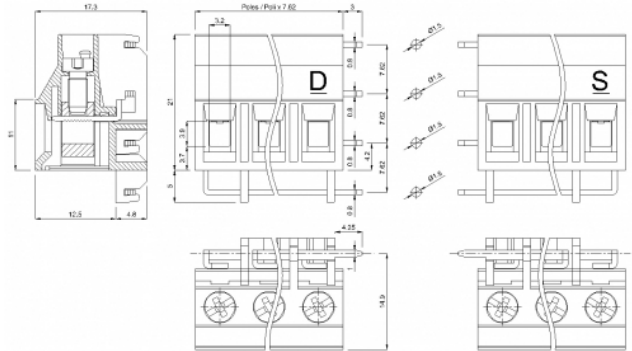
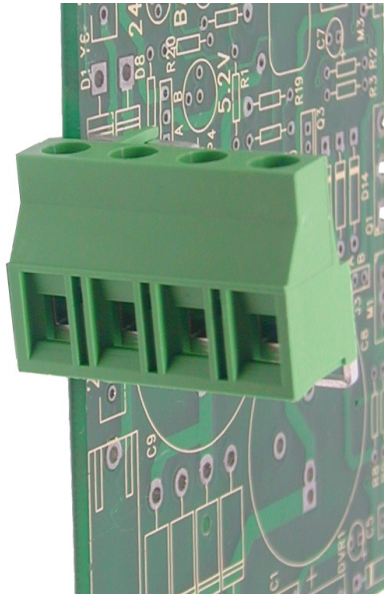


MV474-7,62-S



GENERAL INFORMATION

pitch	7,62 mm
Height	21 mm
Depth	17.3 mm
Dimensional class	Alta
Wire section	6.0 mm ² / 10 AWG
Clamp opening size	3.2 x 3.9 mm
Wire stripping	max 9 mm
Operating temperature	-40 ÷ +130 °C

ELECTRICAL CHARACTERISTICS

Current	32 A
Voltage	750 V

MECHANICAL CHARACTERISTICS

Screw	M3
Recommended torque	0.8÷0.88 Nm / 7.2÷7.9 in.lbs

APPROVALS DATA



Current	-	-	UL 1059
Voltage	-	-	36 A factory / 30 A field
Wire section	-	-	600 V
Torque	-	-	10 AWG
FILE	-	-	7.2 Lb-in
			E178356

MATERIALS

Housing	PA - UL 94 V0
Screw	Galvanized steel
Clamp	Nickel-plated copper alloy
Terminal	Tin-plated copper alloy

COLOURS

Standard



On request



POLES

4

NAME

MV474-7,62-S

3D FILE

File available