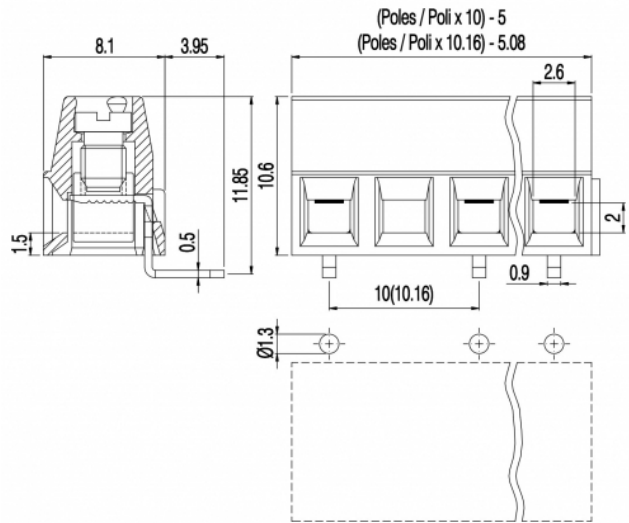


MV15_-10-H



GENERAL INFORMATION

| | |
|-----------------------|------------------------------|
| pitch | 10 mm |
| Height | 10.6 mm |
| Depth | 8.1 mm |
| Dimensional class | Bassa |
| Wire section | 1.5 mm ² / 16 AWG |
| Clamp opening size | 2.6 x 2 mm |
| Wire stripping | max 6 mm |
| Operating temperature | -40 ÷ +130 °C |

ELECTRICAL CHARACTERISTICS

| | |
|--------------|-------------|
| Current | 13.5 A |
| Voltage | 750 V |
| Test Voltage | 3 kVrms/60s |

MECHANICAL CHARACTERISTICS

| | |
|--------------------|------------------------------|
| Screw | M3 |
| Recommended torque | 0.5÷0.55 Nm / 4.5÷4.9 in.lbs |

APPROVALS DATA



| | EN 60998-1 | | UL 1059 |
|--------------|---------------------|---|-----------------------------|
| Current | 13.5 A | - | 13.5 A factory / 10 A field |
| Voltage | 750 V | - | 600 V |
| Wire section | 1.5 mm ² | - | 16 ÷ 30 AWG |
| Torque | 0.5 Nm | - | 4.5 Lb-in |
| FILE | EQ202 | - | E178356 |

MATERIALS

| | |
|---------|----------------------------|
| Housing | PA - UL 94 V0 |
| Screw | Galvanized steel |
| Clamp | Nickel-plated copper alloy |

Terminal
SCIP Number

Tin-plated copper alloy
8e28a064-07ab-45c1-afc0-7873209ceda4

COLOURS

Standard

On request



| POLES | NAME | 3D FILE |
|--------------|-------------|-------------------------------------|
| 1 | MV151-10-H | File not available for this product |
| 2 | MV152-10-H | File not available for this product |
| 3 | MV153-10-H | File not available for this product |
| 4 | MV154-10-H | File not available for this product |
| 5 | MV155-10-H | File not available for this product |
| 6 | MV156-10-H | File not available for this product |