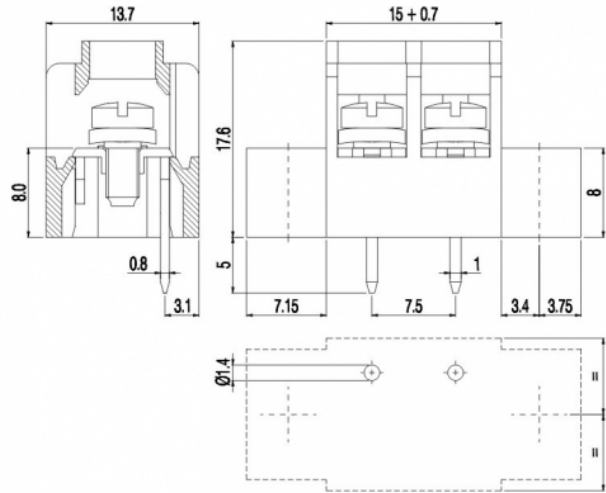
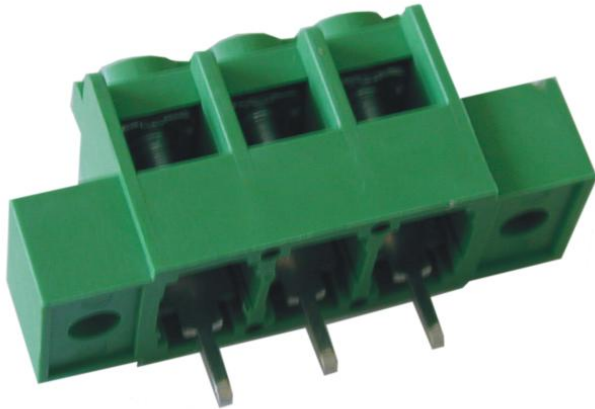


MT17_-7,5-VCK



GENERAL INFORMATION

pitch	7,5 mm
Height	17.6 mm
Depth	13.7 mm
Dimensional class	Bassa
Wire section	2x2.5 mm ² / 2x14 AWG
Clamp opening size	-
Wire stripping	max 9 mm
Operating temperature	-40 ÷ +130 °C

ELECTRICAL CHARACTERISTICS

Current	24 A
Voltage	450 V
impulse voltage	2.5 kV

MECHANICAL CHARACTERISTICS

Screw	M3
Recommended torque	0.5÷0.55 Nm / 4.5÷4.9 in.lbs

APPROVALS DATA



Current	-	-	UL 1059
Voltage	-	-	20 A factory / 15 A field
Wire section	-	-	300 V
Torque	-	-	30 AWG
FILE	-	-	4.5 Lb-in
			E178356

MATERIALS

Housing	PA - UL 94 V0
Screw	Galvanized steel
Clamp	-
Terminal	Tin-plated copper alloy

COLOURS

Standard

On request

BK

GN

GY

BL

RD

YL

OG

POLES	NAME	3D FILE
2	MT172-7,5-VCK	File not available for this product
3	MT173-7,5-VCK	File not available for this product