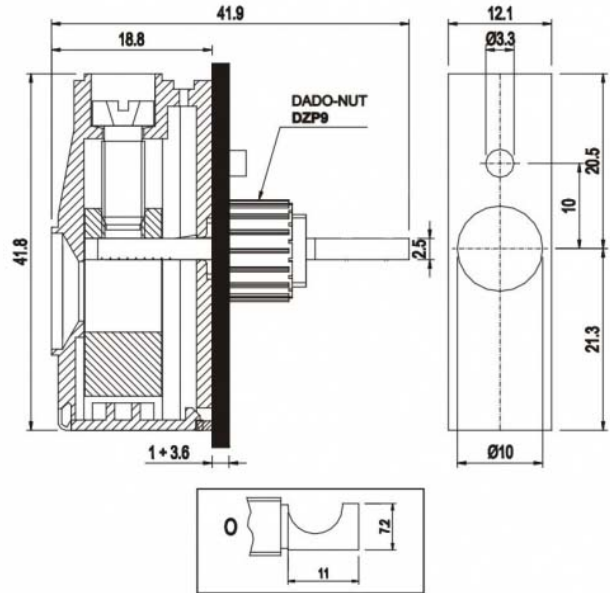


# MPT1612-O



## GENERAL INFORMATION

|                       |                            |
|-----------------------|----------------------------|
| pitch                 | 12,1 mm                    |
| Height                | 41.8 mm                    |
| Depth                 | 18.8 mm                    |
| Dimensional class     | n/a                        |
| Wire section          | 16 mm <sup>2</sup> / 6 AWG |
| Clamp opening size    | -                          |
| Wire stripping        | max 17 mm                  |
| Operating temperature | -40 ÷ +130 °C              |

## ELECTRICAL CHARACTERISTICS

|         |       |
|---------|-------|
| Current | 76 A  |
| Voltage | 450 V |

## MECHANICAL CHARACTERISTICS

|                    |                           |
|--------------------|---------------------------|
| Screw              | M5                        |
| Recommended torque | 2÷2.2 Nm / 18÷19.8 in.lbs |

## APPROVALS DATA



|              |   | EN 60998-1         | UL 1059                   |
|--------------|---|--------------------|---------------------------|
| Current      | - | 76 A               | 85 A factory / 85 A field |
| Voltage      | - | 450 V              | 600 V                     |
| Wire section | - | 16 mm <sup>2</sup> | 4 AWG                     |
| Torque       | - | 2 Nm               | 18 Lb-in                  |
| FILE         | - | 40016489           | E178356                   |

## MATERIALS

Housing  
Screw  
Clamp  
Terminal

PA - UL 94 V0  
Galvanized steel  
Nickel-plated copper alloy  
Tin-plated copper alloy

**COLOURS**

Standard



On request



**POLES**

01

**NAME**

MPT1612-O

**3D FILE**

File available