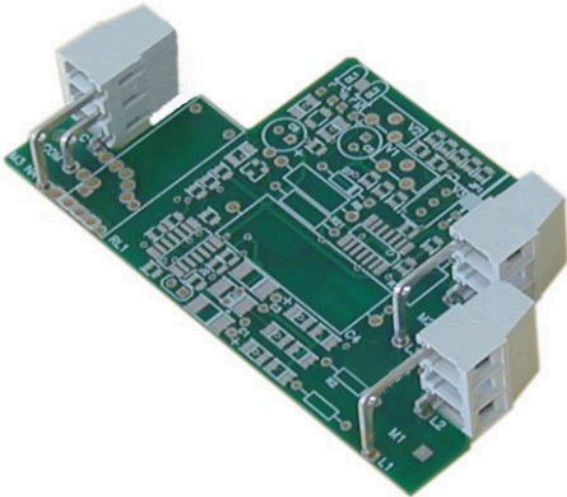


# ML252-10-D-LC



## GENERAL INFORMATION

|                       |                              |
|-----------------------|------------------------------|
| pitch                 | 10 mm                        |
| Height                | 15.3 mm                      |
| Depth                 | 9.5 mm                       |
| Dimensional class     | Media                        |
| Wire section          | 2.5 mm <sup>2</sup> / 14 AWG |
| Clamp opening size    | 2.7 x 2.7 mm                 |
| Wire stripping        | max 7 mm                     |
| Operating temperature | -40 ÷ +130 °C                |

## ELECTRICAL CHARACTERISTICS

|         |       |
|---------|-------|
| Current | 16 A  |
| Voltage | 750 V |

## MECHANICAL CHARACTERISTICS

|                    |                              |
|--------------------|------------------------------|
| Screw              | M3                           |
| Recommended torque | 0.5÷0.55 Nm / 4.5÷4.9 in.lbs |

## APPROVALS DATA



|              |                     |   |                           |
|--------------|---------------------|---|---------------------------|
|              | <b>EN 60998-1</b>   |   | <b>UL 1059</b>            |
| Current      | 16 A                | - | 15 A factory / 15 A field |
| Voltage      | 750 V               | - | 600 V                     |
| Wire section | 2.5 mm <sup>2</sup> | - | 12 AWG                    |
| Torque       | 0.4 Nm              | - | 4.5 Lb-in                 |
| FILE         | CA02.01614          | - | E178356                   |

## MATERIALS

|          |                            |
|----------|----------------------------|
| Housing  | PA - UL 94 V0              |
| Screw    | Galvanized steel           |
| Clamp    | Nickel-plated copper alloy |
| Terminal | Tin-plated copper alloy    |

## COLOURS



On request



| POLES | NAME          | 3D FILE        |
|-------|---------------|----------------|
| 2     | ML252-10-D-LC | File available |