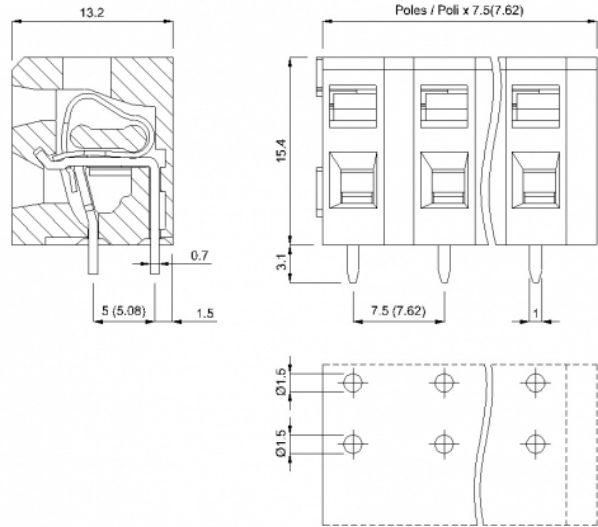
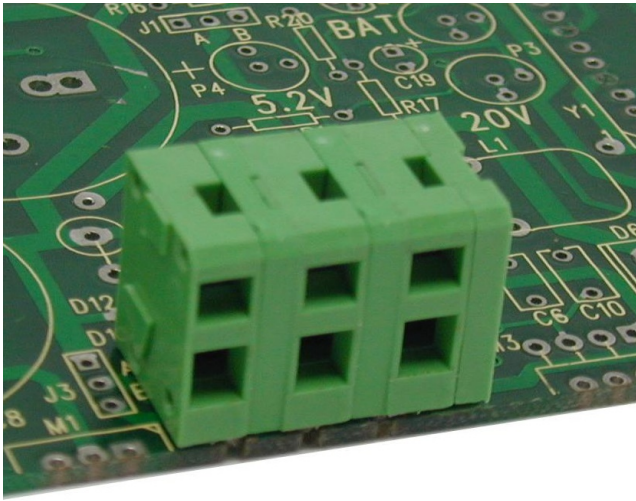


# MG1\_\_-7,5-H



## GENERAL INFORMATION

pitch	7,5 mm
Height	14.3 mm
Depth	16.75 mm
Dimensional class	Bassa
Wire section	2.5 mm <sup>2</sup> / 14 AWG
Clamp opening size	2.45 x 2.45 mm
Wire stripping	max 9 mm
Operating temperature	-40 ÷ +130 °C

## ELECTRICAL CHARACTERISTICS

Current	24 A
Voltage	450 V
impulse voltage	2 kV

## MECHANICAL CHARACTERISTICS

Screw	-
Recommended torque	-

## APPROVALS DATA



Current	-	-	<b>UL 1059</b>
Voltage	-	-	17 A factory / 17 A field
Wire section	-	-	300 V
Torque	-	-	12 AWG
FILE	-	-	-
			E178356

## MATERIALS

Housing	PA - UL 94 V0
Screw	-
Spring	Spring steel
Terminal	Tin-plated copper alloy

**COLOURS**

Standard



On request



POLES	NAME	3D FILE
02	MG102-7,5-H	File not available for this product
03	MG103-7,5-H	File not available for this product
04	MG104-7,5-H	File not available for this product
05	MG105-7,5-H	File not available for this product
06	MG106-7,5-H	File not available for this product
07	MG107-7,5-H	File not available for this product
08	MG108-7,5-H	File not available for this product
09	MG109-7,5-H	File not available for this product
10	MG110-7,5-H	File not available for this product
11	MG111-7,5-H	File not available for this product
12	MG112-7,5-H	File not available for this product
13	MG113-7,5-H	File not available for this product
14	MG114-7,5-H	File not available for this product
15	MG115-7,5-H	File not available for this product
16	MG116-7,5-H	File not available for this product
17	MG117-7,5-H	File not available for this product
18	MG118-7,5-H	File not available for this product
19	MG119-7,5-H	File not available for this product
20	MG120-7,5-H	File not available for this product
21	MG121-7,5-H	File not available for this product
22	MG122-7,5-H	File not available for this product
23	MG123-7,5-H	File not available for this product
24	MG124-7,5-H	File not available for this product