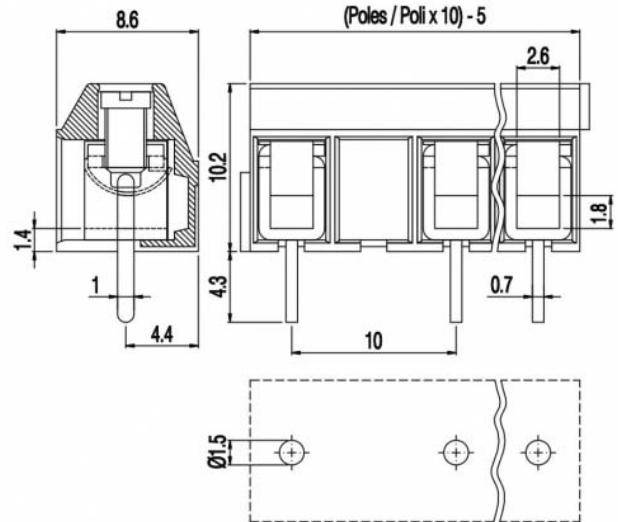


MBE15_-10-V



GENERAL INFORMATION

| | |
|-----------------------|------------------------------|
| pitch | 10 mm |
| Height | 10.2 mm |
| Depth | 8.6 mm |
| Dimensional class | Bassa |
| Wire section | 2.5 mm ² / 14 AWG |
| Clamp opening size | 2.6 x 2 mm |
| Wire stripping | max 8 mm |
| Operating temperature | -40 ÷ +130 °C |

ELECTRICAL CHARACTERISTICS

| | |
|-----------------|-------|
| Current | 24 A |
| Voltage | 750 V |
| impulse voltage | 3 kV |

MECHANICAL CHARACTERISTICS

| | |
|--------------------|----------------------------|
| Screw | M2.5 |
| Recommended torque | 0.4÷0.44 Nm / 3.6÷4 in.lbs |

APPROVALS DATA



| | EN 60998-1 | EN 60998-1 | UL 1059 |
|--------------|---------------------|---------------------|---------------------------|
| Current | 17.5 A | 17.5 A | 20 A factory / 15 A field |
| Voltage | 750 V | 750 V | 600 V |
| Wire section | 1.5 mm ² | 1.5 mm ² | 14 AWG |
| Torque | 0.4 Nm | 0.4 Nm | 3.6 Lb-in |
| FILE | EP151 | 40019705 | E178356 |

MATERIALS

| | |
|---------|-------------------------|
| Housing | PA - UL 94 V0 |
| Screw | Galvanized steel |
| Clamp | Tin-plated copper alloy |

Terminal
SCIP Number

Tin-plated copper alloy
f96aa5fb-ce76-4818-a732-b41ce6983956

COLOURS

Standard



On request



POLES

NAME

3D FILE

| | | |
|---|-------------|----------------|
| 1 | MBE151-10-V | File available |
| 2 | MBE152-10-V | File available |
| 3 | MBE153-10-V | File available |
| 4 | MBE154-10-V | File available |
| 5 | MBE155-10-V | File available |
| 6 | MBE156-10-V | File available |