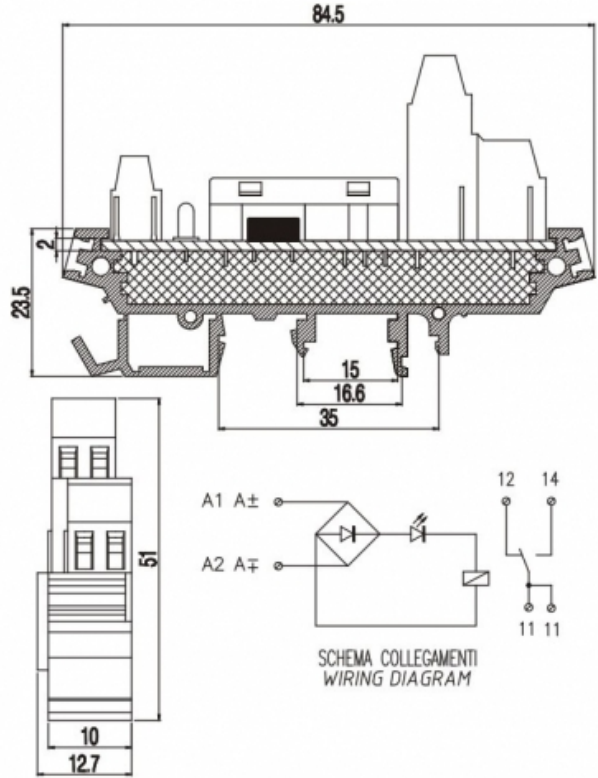


# IMZ-1s



## GENERAL INFORMATION

pitch	-
Height	51 mm
Depth	84.5 mm
Dimensional class	n/a
Wire section	2.5 mm <sup>2</sup> / 14 AWG
Clamp opening size	-
Wire stripping	-
Operating temperature	-

## ELECTRICAL CHARACTERISTICS

Current	5 A
Voltage	250 V
Test Voltage	-

## MECHANICAL CHARACTERISTICS

Screw	-
Recommended torque	-

## APPROVALS DATA



Current	-	-	-
Voltage	-	-	-
Wire section	-	-	-

Torque	-	-	-
FILE	-	-	-

**MATERIALS**

Housing			PA - UL 94 V0
Screw			-
Clamp			-
Terminal			-

**COLOURS**

Standard

On request

